

BISCO's Intraoral Repair Kit



BISCO's Intraoral Repair Kit provides all the materials necessary to repair the broken or damaged restorations intraorally. Once the operative site is properly prepared, an esthetic and durable repair can be successfully achieved utilizing a resin composite material. The Intraoral Repair Kit is a cost effective option as a practical restorative solution. The Intraoral Repair Kit is complete with BISCO's Z-PRIME™ Plus, Porcelain Primer, Porcelain Bonding Resin, Dual-Cured Opaquer, Porcelain Etchant (9.5% HF) and Barrier Gel.

INDICATIONS FOR USE

- Repair of Porcelain & Lithium Disilicate Restorations
- Repair of Porcelain-Fused-to-Metal or Zirconia/Alumina Restorations
- Repair of Direct or Indirect Composite Restorations



BISCO products are proudly made in the U.S.A.

TO ORDER CALL: 800-247-3368 • 847-534-6000



Rx Only

MC-30601R

ORDERING INFORMATION

INTRAORAL REPAIR KIT

B-22300K

1 Bottle Porcelain Primer (3ml), 1 Syringe 9.5% Porcelain Etchant (5g), 1 Syringe Barrier Gel (5g), 1 Bottle Z-PRIME™ Plus (2ml), 1 Bottle Porcelain Bonding Resin (6ml), 1 Bottle Opaquer Catalyst (3ml), 1 Bottle Opaquer Base Universal (3ml), Accessories, Instructions/MSDS



BISCO
www.bisco.com

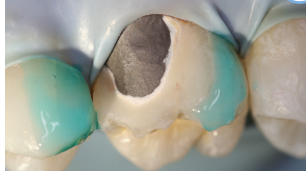
BISCO's Intraoral Repair Kit

Repair of Porcelain-Fused-to-Metal or Zirconia/Alumina Restorations

Step 1

Always use a rubber dam. The use of a rubber dam during porcelain repair provides several benefits, including isolation from saliva during bonding and soft-tissue protection when using hydrofluoric acid intraorally.

Step 2



Remove the glaze & bevel (45 degree) the porcelain around the area to be repaired. Place BARRIER GEL on gingival tissue that may be exposed or porcelain to protect areas where etching is not desired.

Step 3



Remove cap from PORCELAIN ETCHANT, securely attach dispensing tip and verify etchant flow prior to applying intraorally. Apply PORCELAIN ETCHANT (9.5% HF) to the dry porcelain surface for 90 seconds. Continue to observe the etch site throughout the entire procedure. Suction the PORCELAIN ETCHANT, then rinse with a copious amount of water and air dry. The etched surface should appear dull and frosty (if porcelain has a white/chalky appearance, agitate a moist microbrush on the porcelain to remove salt and debris created by etching, rinse and dry).

NOTE: Porcelain may be sandblasted or abraded with a coarse diamond bur as an alternative to Hydrofluoric Acid Etching.

SEE INSTRUCTIONS FOR ADDITIONAL WARNINGS RELATED TO PORCELAIN ETCHANT

Step 4



Apply 1 coat of PORCELAIN PRIMER to the etched porcelain surface and allow to dwell for 30 seconds. Dry with air syringe.

Step 5



Apply 1-2 coats of Z-PRIME™ Plus to the exposed metal/zirconia/alumina and dry with an air syringe for 3-5 seconds.

Step 6



If metal masking is required, shake OPAQUER Base and Catalyst bottles well before dispensing. Dispense one drop each of Catalyst and Base onto a mixing pad, and mix with a brush tip. Apply a thin coat of OPAQUER only to the metal surface.

Step 7



Allow to self cure, or light cure for 5 seconds. An oxygen inhibited layer will be present on the surface once the curing process has completed. This is normal for this material.

Step 8



Apply a thin layer of PORCELAIN BONDING RESIN to the repair site. Spread composite evenly over the surface and light cure.

Step 9



Complete the repair and finish/polish.

See instructions for use for the following repairs:
Repair of Porcelain & Lithium Disilicate Restorations
Repair of Old or Indirect Composite Restorations

TO ORDER CALL: 800-247-3368 • 847-534-6000 • www.bisco.com