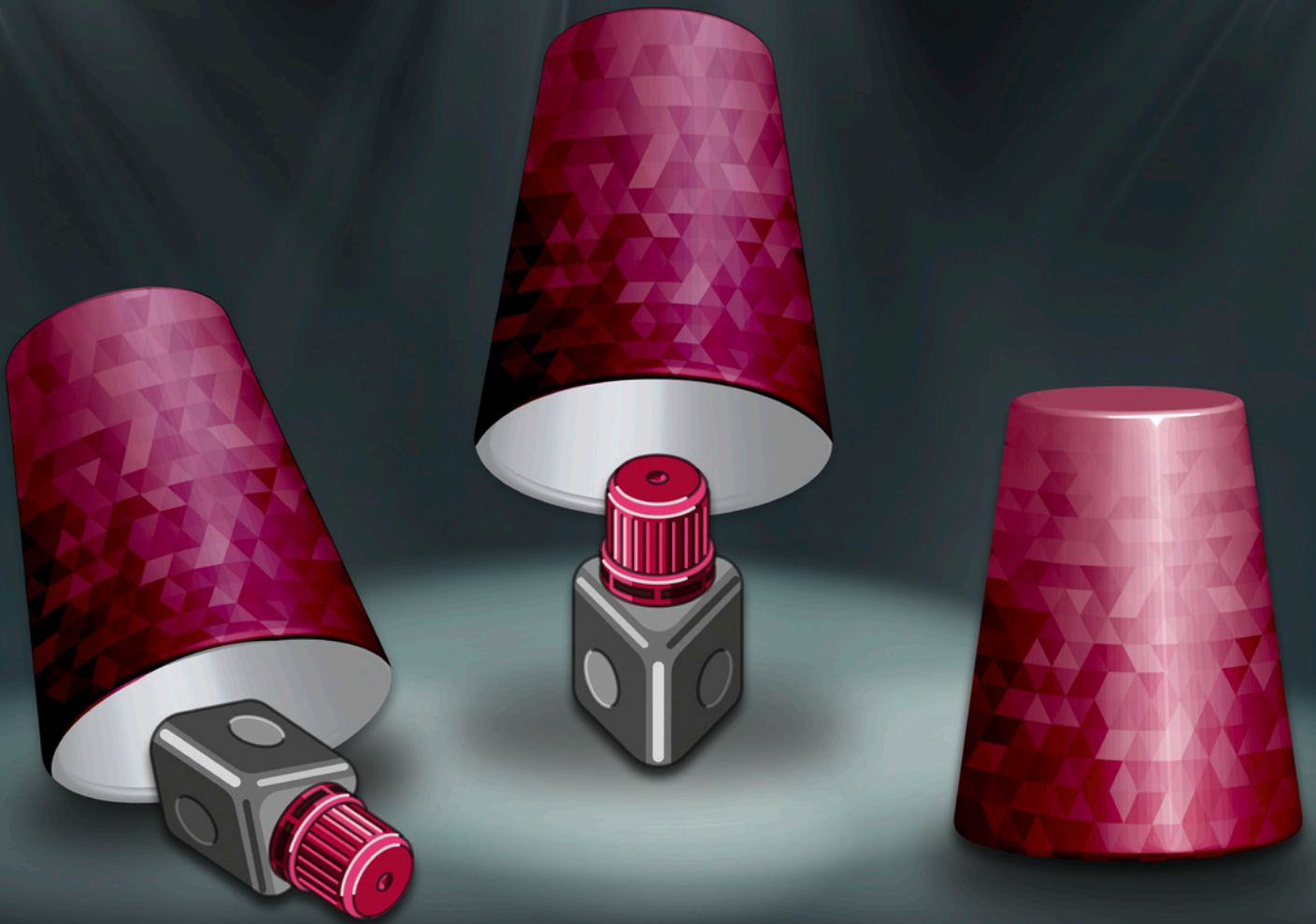


ONE COMPONENT LIGHT CURED UNIVERSAL ADHESIVE



ALWAYS THE RIGHT CHOICE

ONE COAT 7 UNIVERSAL

All-in-one

 **COLTENE**

Dosage forms

New and unique bottle

The new ergonomic bottle with optimised dropper is distinguished by precise, clean dispensing without continued flow.

- Up to 300 applications*
- Simplified handling
- Ergonomic



Practical Single Dose

ONE COAT 7 UNIVERSAL is available as practical single dose for hygienic single use application. For easy, all-round efficient performance in daily practice routine.

- User-friendly
- Easy application
- Hygienic



* Source: internal data

The all-rounder

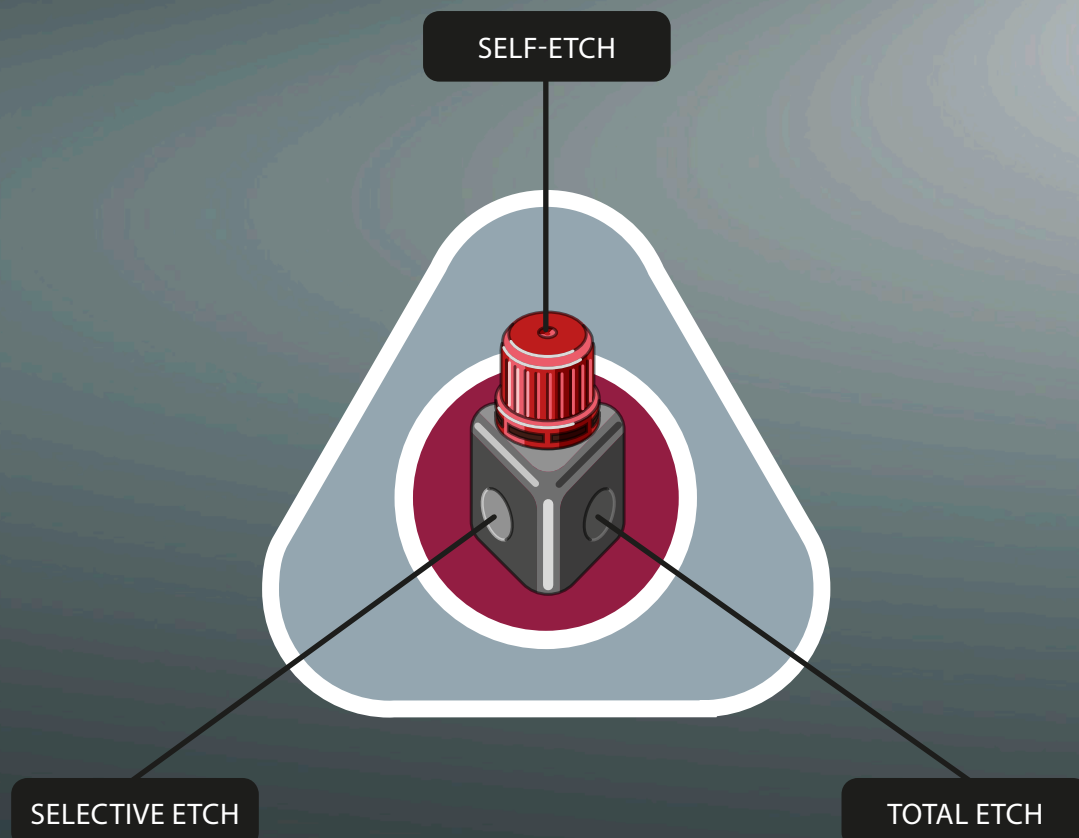
One bond for all application techniques

- Exceptional bonding values on enamel and dentine
- Excellent marginal seal
- Minimised postoperative sensitivity

With the system optimisation of ONE COAT 7.0 , the reliable all-in-one bond ONE COAT 7 UNIVERSAL is now available for every indication.

The magic triangle

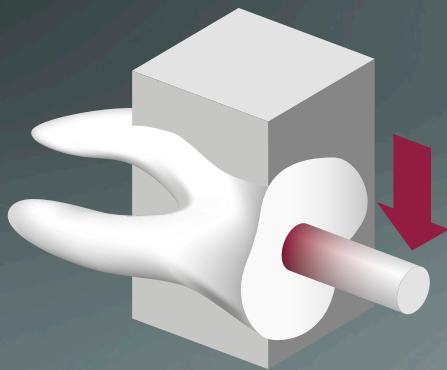
No matter whether Self-Etch, Total Etch or Selective Etch, ONE COAT 7 UNIVERSAL covers all needs. Effortless bonding to materials such as gold, titanium, ceramics, zirconium oxide and composite entirely without additional primer or silane.



Technical data

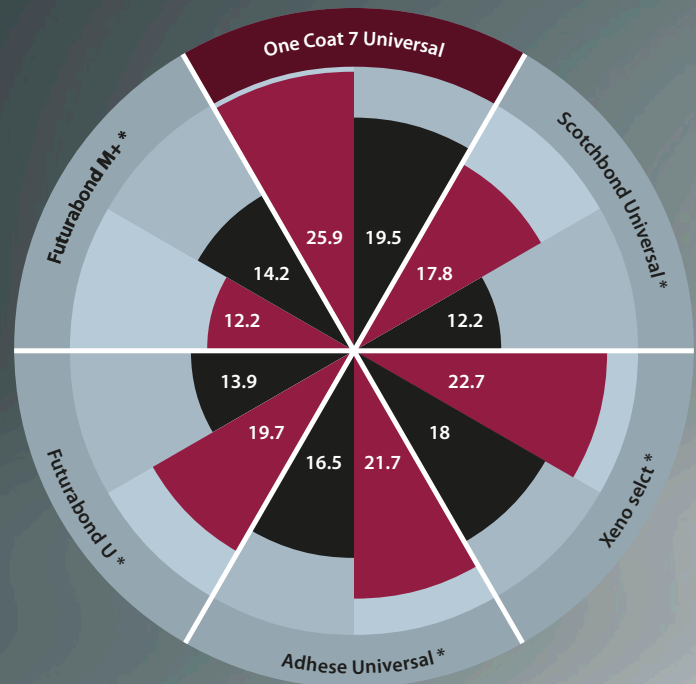
The test method

The graphs represent the shear bonding strength (SBS/MPa) according to Watanabe. High bonding strengths are indicative of a good substance between bonding agent and tooth material. This is crucial for the good bond of dental restorations.

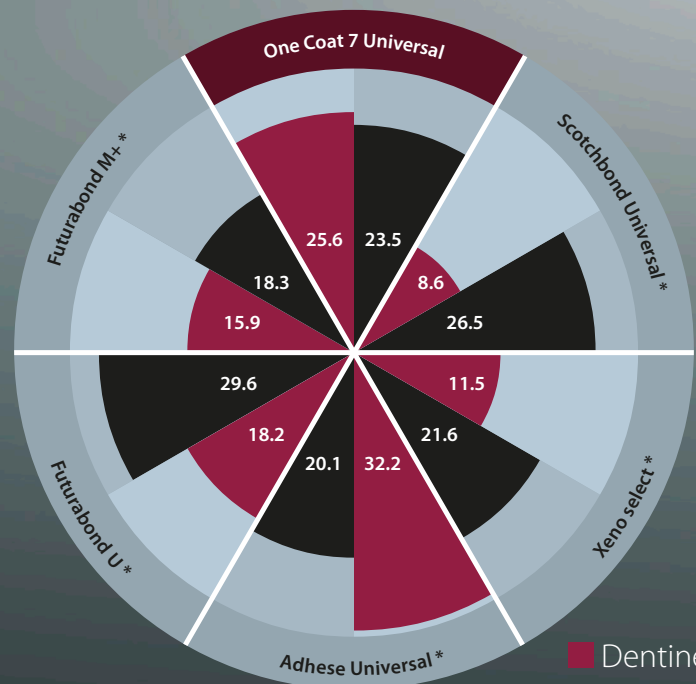


Schematic representation SBS

Comparison of shear bonding strength (SBS/MPa) using the Self-Etch technique



Comparison of shear bonding strength (SBS/MPa) using the Total Etch technique



* Not registered COLTENE trademarks
Source: internal data

■ Dentine
■ Enamel

Properties

Antibacterial*

ONE COAT 7 UNIVERSAL has been tested for its antibacterial* effect.



*Testing with proliferation test for antimicrobial activity with *S.epidermidis* by QualityLabs, Germany.

Chemical curing

The special One Coat 7.0 Activator ensures compatibility with chemically curing materials.



ONE COAT 7 UNIVERSAL
contains:



*Methacryloyl-oxydecyl-dihydrogenphosphat

Order information



60019538 ONE COAT 7 UNIVERSAL Intro Kit

- 1 × 5 ml One Coat 7 Universal
- 1 × 2.5 ml Etchant Gel S
- 1 × 20 Application tips
- 1 × 50 Brushes black
- 1 × Mixing well
- 1 × Cover for mixing well



7054 ONE COAT 7.0 Activator Kit

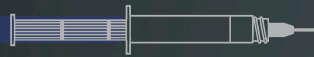
- 1 × 3 ml One Coat 7.0 Activator
- 1 × 50 Brushes black

60019539 ONE COAT 7 UNIVERSAL Refill

- 1 × 5 ml One Coat 7 Universal

7373 Etchant Gel S Kit

- 2 × 2.5 ml Syringe
- 1 × 20 Application tips



60019540 ONE COAT 7 UNIVERSAL Single Dose

- 50 × 0.1 ml One Coat 7 Universal Single Dose
- 1 × 50 Brushes black

7634 Brushes black

- 1 × 50 Brushes black



© 2016 Coltène/Whaledent AG
www.coltene.com | oc7universal.coltene.com

Coltène/Whaledent AG
 Feldwiesenstrasse 20
 9450 Altstätten / Switzerland
 T +41 71 757 53 00
 F +41 71 757 53 01
info.ch@coltene.com

Coltène/Whaledent Ltd.
 The President Suite
 Kendal House, Victoria Way
 Burgess Hill, West Sussex
 RH15 9NF / UK
 T +44 1444 235486
 F +44 1444 870640
info.uk@coltene.com

Coltène/Whaledent Inc.
 235 Ascot Parkway
 Cuyahoga Falls, Ohio 44223 / USA
 T +1 330 916 8800
 F +1 330 916 7077
info.us@coltene.com



COLTENE