



1



Compare the size of CoForm to the fractured tooth and choose the right matrix.

2



Apply composite material in the CoForm and press into place with a slight moving motion to avoid bubbles.

3

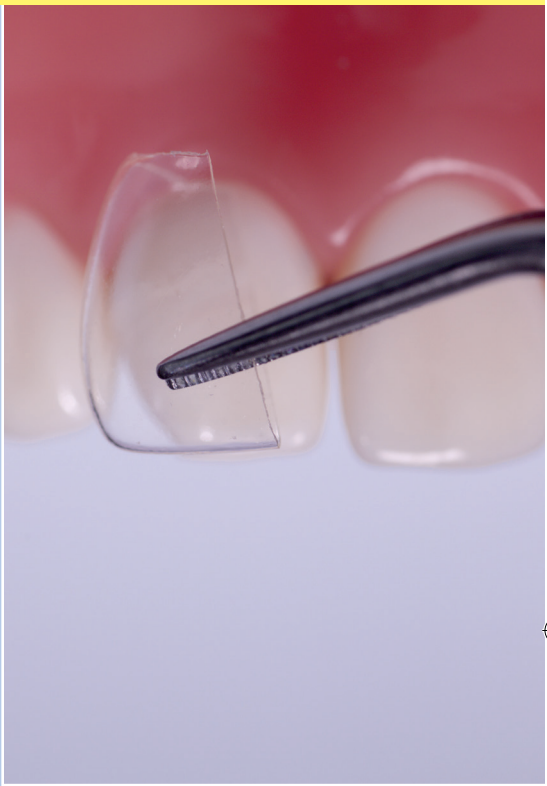


Prewedge and insert CoForm in place. If needed cut the plastic matrix to make adjustments. Prepare the enamel, bevel 0,5-1 mm for a maximal enamel bonding surface. Etch and bond as usual.

4



Light cure through the CoForm matrix. Peel off after curing, correct excess material, shape and polish to complete restoration.



CoForm Transparent Matrix Matrices

Anterior transparent pre-formed matrices for resin-based composite restorations. Supplied in a ready cut series of mesial and distal corners for anteriors and canines. Ideal for forming composite restorations as fractured incisive edges.

For further clinical advices and suggestions see www.directadental.com



106600-2016-05-20



DIRECTA AB
P.O. Box 723, Finvids väg 8
SE-194 27 Upplands Väsby, Sweden
Tel: +46 8 506 505 75

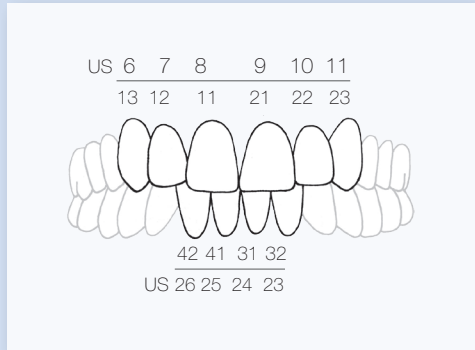
DIRECTA INC
64 Barnabas Road, Unit 3
Newtown, CT 06470, United States
203.491.2273

DIRECTA
directadentalgroup.com



Transparent Matrix Matrices

B	A	Qty	US	Mesial			Distal	US	Qty	A	B
x	x	2x4	8	11M			11D	8	2x4	x	x
x	x	2x4	9	21M			21D	9	2x4	x	x
x	x	2x4	7	12M			12D	7	2x4	x	x
x	x	2x4	10	22M			22D	10	2x4	x	x
	x	2x4	6	13M			13D	6	2x4	x	
	x	2x4	11	23M			23D	11	2x4	x	
	x	2x4	24-23	31-32M			31-32D	24-23	2x4	x	
	x	2x4	26-25	41-42M			41-42D	26-25	2x4	x	



A = assortment 128 pcs
 B = assortment of 64 pcs
 Four sizes of each