

The power of two
for all dental challenges



OptiBond™ eXTRa Universal

Two-component universal adhesive

ONE BRAND. ONE PROTOCOL. ANY PROCEDURE.

Introducing OptiBond™ eXTRa Universal, the new bonding agent from KaVo Kerr with unique Smart pH technology, patented formula enriched with GPDM Monomer and Ternary Solvent System.

- Outstanding compatibility with virtually all types of cements, composites and core build-up materials, eliminating the need for auxiliary product
- Easy and consistent two-bottle protocol with any etching technique
- Full reliability afforded by OptiBond technology, known as the “Gold Standard” in adhesion

KAVO  **Kerr**

eXTRa new: OptiBond™ eXTRa Universal

For over 125 years, we have been serving the comprehensive needs of the dental community in pursuit of enhancing oral health. Especially when it comes to bonding, we innovate Dental Excellence: With more than 25 years of experience and long-term proven results, all our products set benchmarks in adhesion. Now we are combining our three outstanding technologies GPDM Monomer, Kerr Ternary Solvent System and Smart pH into one new adhesive solution: the new OptiBond™ eXTRa Universal.



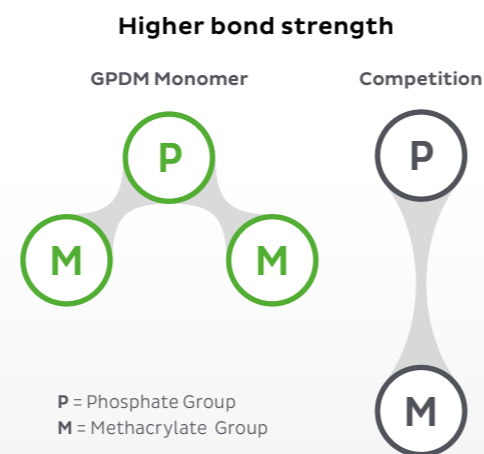
**Our best technology
for eXTRaordinary adhesion**

GPDM Monomer

The Gold Standard in Adhesion

The proven OptiBond™ GPDM Monomer ensures better adhesion with both the tooth structure and the resin material and overall higher bond strength.

- An acidic phosphate group effectively anchors the adhesive to the hydrophilic surface of the tooth.
- The presence of more methacrylate functional groups, compared to other adhesive monomers such as MDP, allows a more effective interface with the hydrophobic resin.



Ternary Solvent System

Three solvents in one

To add reliability and reduce technique sensitivity, OptiBond™ eXTRa Universal is also enriched with the Kerr proprietary Ternary Solvent System for an overall combined action:

- **WATER** enhances the etching power and re-wetting ability, facilitating penetration of the adhesive into dentinal tubules.
- **ACETONE** enhances shelf-life stability and increases the acidity and etching during application due to its quick evaporation.
- **ETHANOL** facilitates the formation of a homogeneous adhesive layer, resulting in a less technique-sensitive application.

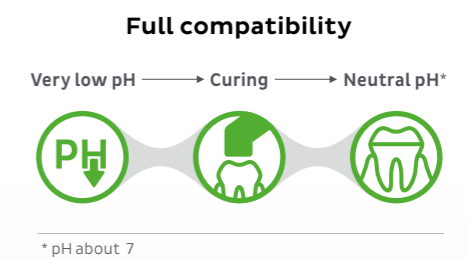


Smart pH

Unique acidity drop

Introducing the exclusive smart pH technology that adapts the acidity of the bonding formula ensuring full indirect compatibility with virtually all resins.

- Prior to curing, OptiBond™ eXTRa Universal features a very low pH for effective enamel etching.
- After curing, the pH neutralises, creating outstanding compatibility with composites and core build-up materials, eliminating the need for any auxiliary products.



Five times ahead: top benefits of OptiBond™ eXTRa Universal

It is more than just one advantage that makes OptiBond™ eXTRa Universal so outstanding. The combination of five benefits is setting new benchmarks – giving you one solution, from one brand, with one protocol, on every procedure. So OptiBond eXTRa Universal will be your one and only new bonding agent in your daily practice.



Strong & durable

OptiBond™ eXTRa Universal ensures a double effective action on both tooth structure and the restorative material, resulting in effective bonding strength and durability on any type of substrate. The result is consistent image quality every time.



Consistent & simple

Rely on one single protocol for all indications: from direct to indirect in combination with any type of resin, OptiBond™ eXTRa Universal delivers predictable outstanding results. Trust the unique Dark Cure mode, in combination with NX3, for extremely easy and fast usage.



Only 2 components



Protective

The patented OptiBond™ technology delivers excellent penetration into dentinal tubules, giving you protection against micro-leakage and post-operative sensitivity.



Smart

Reduce inventory with the choice of one single bonding solution for all treatments and techniques. With OptiBond™ eXTRa Universal you have the flexibility to choose your preferred etching technique and forget about any auxiliary product.



Aesthetic

Uniform and very low film thickness delivers amazing aesthetic results and provides also a significant advantage for indirect restoration placement.

Performance backed by evidence: proven OptiBond™ technology

Only convincing results in numerous clinical tests and examinations lead to equally convincing results in your daily practice.

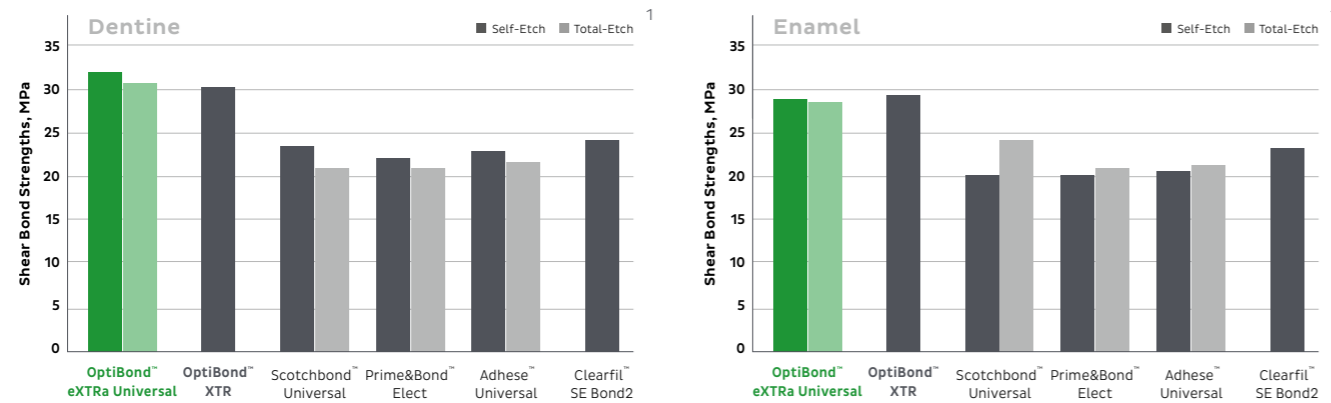
The outstanding data prove that OptiBond™ eXTRa Universal is way ahead of its time and the leading competitors.



Strong & durable

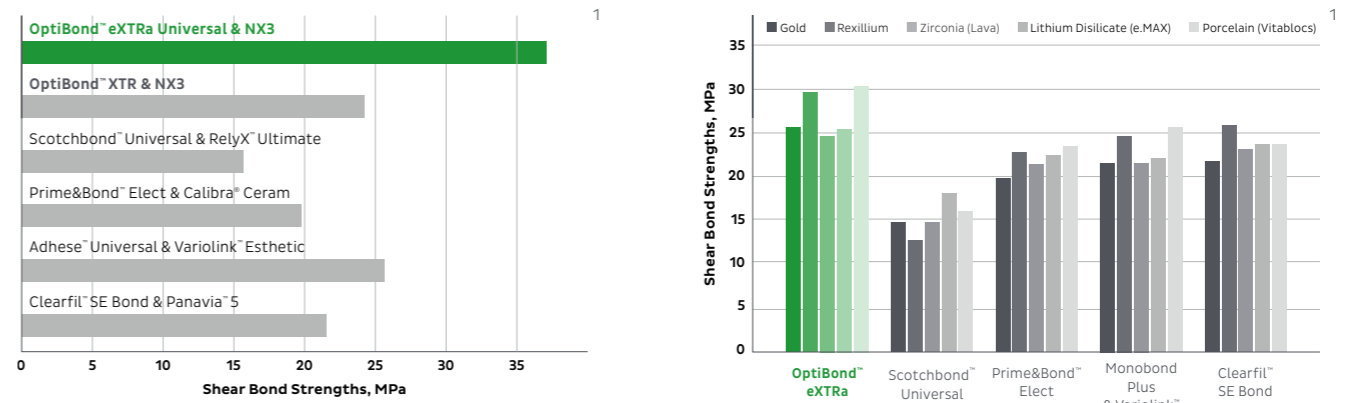
Bond strength to dentine and enamel

OptiBond™ eXTRa Universal yields outstanding results ensuring superior bond strength compared to leading competitors* on both dentine and enamel. This offers a consistent outcome under different etching techniques and substrates.



High shear bond strength and full compatibility

The combination of OptiBond™ eXTRa Universal and NX3 universal adhesive cement proved to deliver superior bonding strength to dentine without the need for auxiliary products, compared to leading competitors**. So you can experience predictable outcomes with the simplicity of a consistent protocol.



Consistent & simple - smart



Protective

Effective plug and seal action

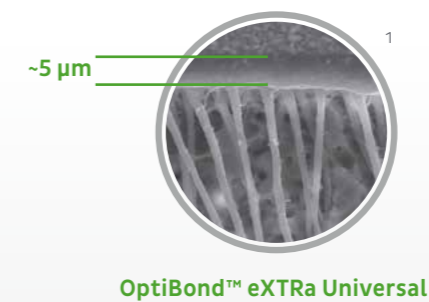
The Primer component is very acidic and hydrophilic, resulting in unique nano-etching capability and outstanding dentinal tubule penetration. The Adhesive component is hydrophobic, offering efficient polymerisation to boost mechanical strength, bond durability and marginal integrity.



* Compared to Scotchbond™ Universal, Prime&Bond™ Elect, Adhese™ Universal, Clearfil SE Protect, Clearfil Universal Bond Quick, Futurabond U to dentine and enamel on Self-Etch and Total Etch mode; compared to Clearfil SE Bond 2 to dentine and enamel on Self-etch mode. Samples were prepared per individual manufacturer's instructions for use.

Imperceptible film thickness

The unique formula has a very low filler load (only 15%), producing a film so thin it is not visible to the naked eye. The result is highly aesthetic without compromising on strength.



** Compared to Adhese™ Universal/Variolink II, Clearfil SE Bond 2/Panavia 5, Scotchbond™ Universal/RelyX Ultimate, Prime and Bond™ Elect/Calibra Ceram, Monobond Plus/Variolink Esthetic DC. Samples were prepared per individual manufacturer's instructions for use.



Aesthetic

1 - Internal data available upon request

Stay tuned

Versatile products, versatile communication. There are many ways to keep in touch with Kerr Dental and learn about our latest news and developments.



Connect with us

Via our social media channels



Receive updates

By signing up to our newsletter



Talk to us

Through our local representatives



Discover what's new

By visiting our website

OptiBond™ and OptiBond™ eXTRa Universal are either registered trademarks or trademarks of Kerr Corporation in the United States and/or other countries. All other trademarks are the property of their respective owners.

Be one of the first to try it:
www.kavokerr.com/try-eXTRa

OptiBond™ eXTRa Universal. Ordering information.

REF/Part. No.	Description
36658	OptiBond™ eXTRa Universal Bottle Kit (10 ml)
36659	OptiBond™ eXTRa Universal Unidose Kit (100 Pack)
36660	OptiBond™ eXTRa Universal Bottle Refill – Primer (5 ml)
36661	OptiBond™ eXTRa Universal Bottle Refill – Adhesive (5 ml)



KaVo Dental GmbH | Bismarckring 39 | 88400 Biberach | Germany
KerrHawe SA | Via Strecce 4 | 6934 Bioggio | Switzerland

KAVO  **Kerr**