



AFFINIS[®]

Perfect Impressions

From the practice for the practice

While loading the tray with AFFINIS heavy body or putty soft, apply AFFINIS wash material light or regular body to the preparation. The unique surface affinity and the carefully adjusted flow properties of the AFFINIS wash materials, which correspond to a hydrocolloid, prevent air entrapments and margin distortions. The ideal timing of AFFINIS makes the procedure effective and time-saving.

During the short setting phase the tray must be held in position. The impression can be easily removed and the high tensile strength guarantees that all details remain unchanged even in undercut areas. The guaranteed dimensional change of less than 0.2% and the perfect impression accuracy of the preparation margins and die contours are the ideal basis for the dental technician to fabricate an accurate restoration.

Never has impression taking been so convenient and precise.



W. Müller, Dr. univ. med. dent.
Prosthodontist (Austria)



AFFINIS light and regular body are available in a 50 ml and 25 ml cartridge system.

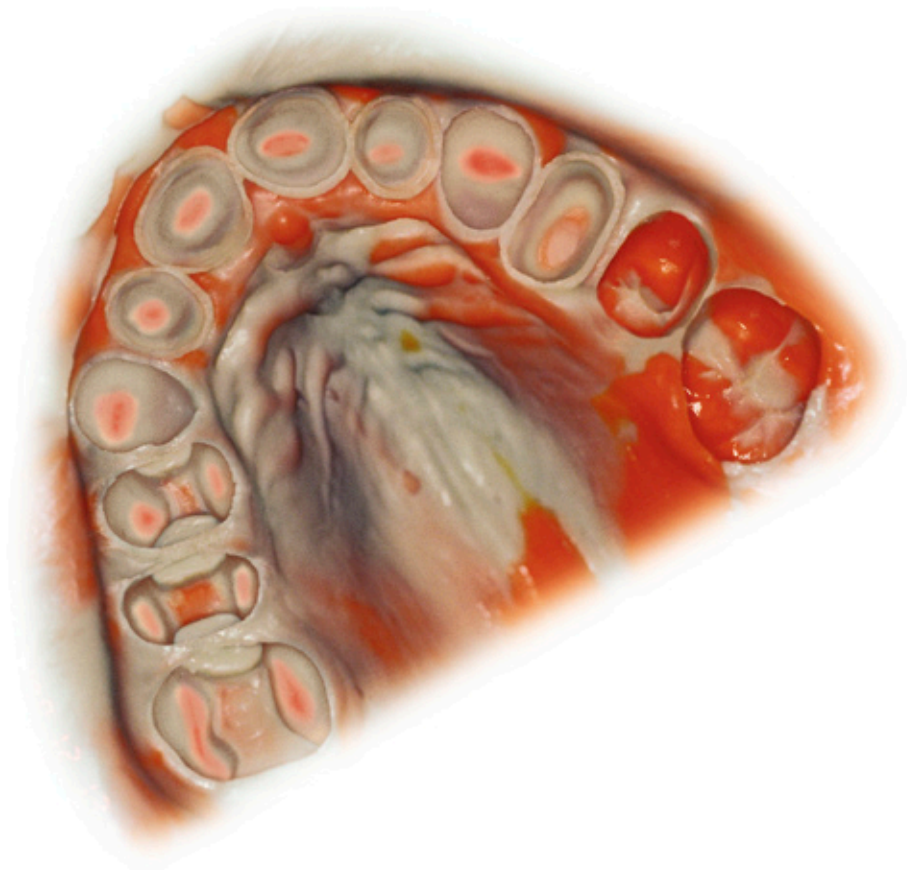
Total setting time:

AFFINIS	Dimensional change in %	End hardness in Shore A	Working time	Total setting time
75 ml				
heavy body	- 0.2	60	max. 60 s	min. 120 s
fast heavy body	- 0.2	60	max. 50 s	min. 80 s
putty				
putty soft	- 0.2	63	max. 70 s	min. 120 s
fast putty soft	- 0.2	63	max. 65 s	min. 110 s
putty super soft	- 0.2	63	max. 65 s	min. 120 s
50 ml / microSystem™				
light body	- 0.2	48	max. 60 s	min. 120 s
regular body	- 0.2	50	max. 60 s	min. 120 s
fast light body	- 0.2	48	max. 50 s	min. 80 s
fast regular body	- 0.2	50	max. 50 s	min. 80 s

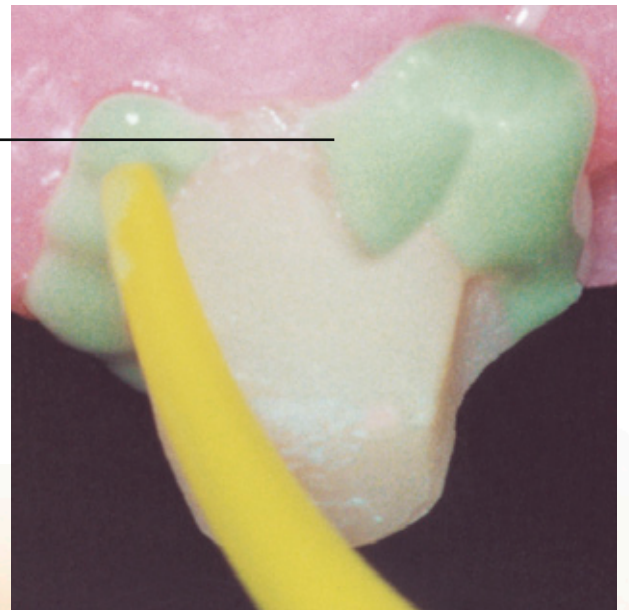
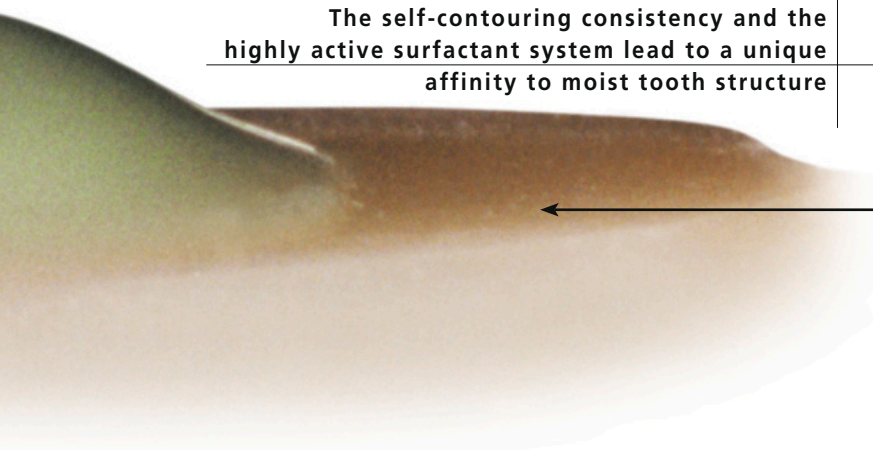
The solution: AFFINIS

Contact angle on moist tooth surface

The perfect impression



The self-contouring consistency and the highly active surfactant system lead to a unique affinity to moist tooth structure



The unique surface affinity of AFFINIS prevents air entrapments and margin distortions

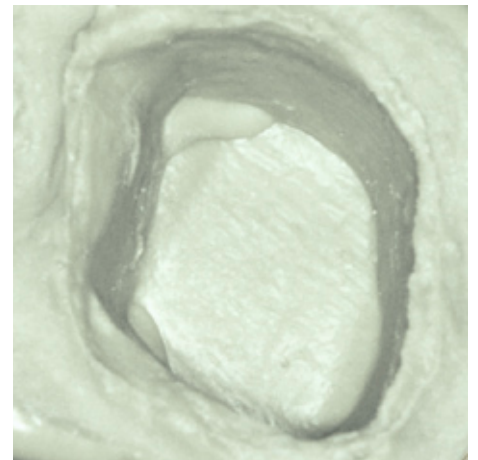
Unique surface affinity and ideal flow properties lead to perfect impressions



Self-contouring consistency and optimal flowability



AFFINIS does not drip off the preparation



No voids or margin distortions

AFFINIS - a new bench mark in impression technology

AFFINIS, an A-Silicone, differs in three characteristic features from other surface activated impression materials.

Unique surface affinity

The differentiating element of AFFINIS is a fast and unique affinity of mixed material to moist tooth structure and tissue (gingiva). With its hydrocolloid-like flow properties, affinis reaches all critical areas without the need of pressure from the tray material.

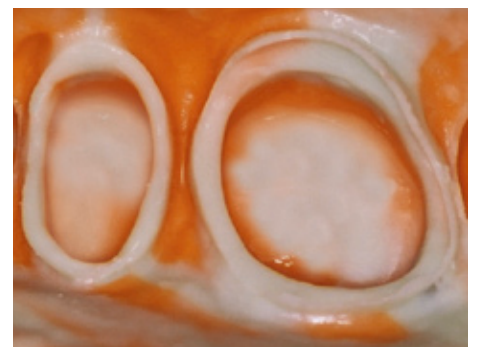
Optimized flow

Typically, the addition of surfactants not only provides improved wetting but unfortunately creates a flow limit of the impression material.

As a consequence, the material tends to entrap air. AFFINIS however, based on its unique combination of additives which are capable of breaking material structures, displays a very low barrier to flow (self-contouring consistency) and this prevents air entrapments. At the same time, the mixed material is optimal thixotropic not to drip off the preparation.

Better models

AFFINIS, due to its synergistic and extremely active surfactant system, displays a fast and outstanding wetting by water of the set impression. When pouring the gypsum, the dental technician will appreciate these properties.



A no void AFFINIS impression

The perfect AFFINIS impression is the key to accurate restorations. It is the basis for the successful teamwork between dentist and dental technician.



AFFINIS - model situation as seen by the dental technician (no margin distortions)

Cause and Effects

Contact angle on moist tooth surface

Innovative surface affinity

The surface affinity of a defined volume of unbonded impression material will take an impression after 10 seconds on moist dentine. This in vitro method shows which impression materials demonstrate ideal flow properties on a moist tooth surface. These properties allow AFFINIS to flow to all clinically relevant points without application of pressure to form the basis of an accurately fitted dental restoration.



Initial wettability on moist tooth surface



Product A



Product B



Product C



Product D



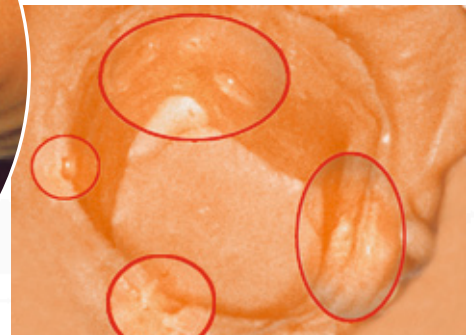
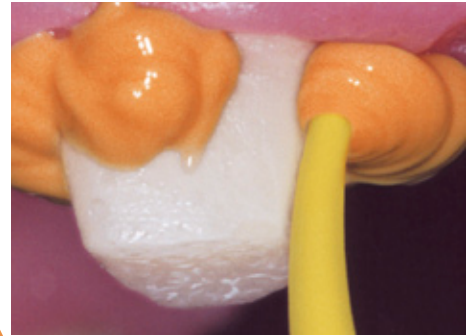
Product E

Defined volume of freshly mixed impression materials on moist dentine – 10 seconds after application



Missing affinity of the impression material to moist tooth structure leads to air entrapments.

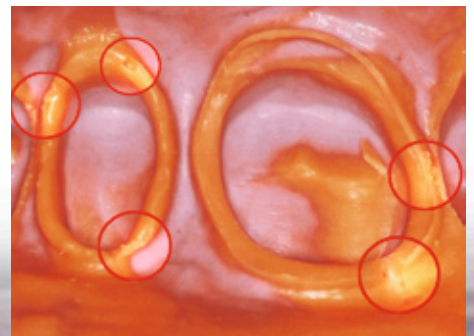
Missing self-contouring consistency and insufficient flowability



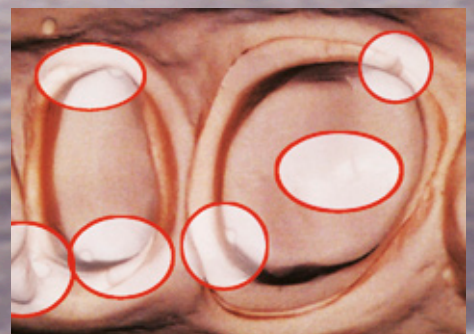
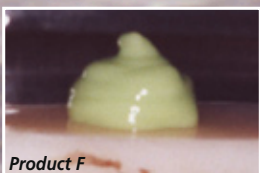
With the pressure of the tray material these air entrapments lead to margin distortions

Any impression material with missing surface affinity leads to air entrapments and voids. This can result in cavities, defective points, margin distortions or distortions in the impression.

The consequence is inaccuracies in dental restorations.



Readability of the impression (voids)



Model situation as seen by the dental technician (margin distortions)

AFFINIS™ influences your success. All down the line.



6530	AFFINIS™ putty soft Base and Catalyst, each 300 ml
6531	AFFINIS™ fast putty soft Base and Catalyst, each 300 ml
6535	AFFINIS™ putty super soft Base and Catalyst, each 300 ml
6520	AFFINIS™ heavy body 75 ml 2 × 75 ml Cartridges, 8 pcs MT/TURQUOISE/CLEAR/WHITE/68/S*
6620	AFFINIS™ fast heavy body 75 ml 2 × 75 ml Cartridges, 8 pcs MT/TURQUOISE/CLEAR/WHITE/68/S*
6547	AFFINIS™ MonoBody 75 ml 2 × 75 ml Cartridges, 8 pcs MT/TURQUOISE/CLEAR/WHITE/68/S*
6501	AFFINIS™ light body 50 ml 2 × 50 ml Cartridges, 12 pcs MT/YELLOW/CLEAR/WHITE/69/S*
6601	AFFINIS™ fast light body 50 ml 2 × 50 ml Cartridges, 12 pcs MT/YELLOW/CLEAR/WHITE/69/S*
6511	AFFINIS™ regular body 50 ml 2 × 50 ml Cartridges, 12 pcs MT/YELLOW/CLEAR/WHITE/69/S*
6611	AFFINIS™ fast regular body 50 ml 2 × 50 ml Cartridges, 12 pcs MT/YELLOW/CLEAR/WHITE/69/S*

Accessories: 50/75 System

6900	Dispenser 50/75 ml	1 pc
6550	MT/YELLOW/CLEAR/WHITE/69/S*	40 pcs
6552	MT/TURQUOISE/CLEAR/WHITE/68/S*	40 pcs
6555	Oral Tips, yellow	100 pcs

Further information:

www.coltenewhaledent.com

www.coltenewhaledent.com
© 2008 Coltène/Whaledent AG

Coltène/Whaledent Ltd.
The President Suite-A
Kendal House, Burgess Hill
Victoria Way
West Sussex, RH15 9NF/U.K.
Tel. +44 (0)1444 235486
Fax +44 (0)1444 870640
hq@coltenewhaledent.co.uk

6487	AFFINIS™ System 360 heavy body 2 × 300 ml Refill package Base, 2 × 62 ml Refill package Catalyst
6485	AFFINIS™ System 360 heavy body Starter Kit 1 × 300 ml Base, 1 × 62 ml Catalyst, 1 × Supporting Cartridge, 10 × MT/GREEN/CLEAR/WHITE/50/S*
6482	AFFINIS™ System 360 MonoBody 2 × 300 ml Refill package Base, 2 × 62 ml Refill package Catalyst
6480	AFFINIS™ System 360 MonoBody Starter Kit 1 × 300 ml Base, 1 × 62 ml Catalyst, 1 × Supporting Cartridge, 10 × MT/GREEN/CLEAR/WHITE/50/S*

Accessories: System 360

6160	Supporting Cartridge	1 pc
6161	MT/GREEN/CLEAR/WHITE/50/S*	40 pcs

6500	AFFINIS™ light body microSystem™ 4 × 25 ml Cartridges microSystem™, 20 pcs MT/GREEN/GREEN/WHITE/70/S*, 20 pcs Oral Tips
6600	AFFINIS™ fast light body microSystem™ 4 × 25 ml Cartridges microSystem™, 20 pcs MT/GREEN/GREEN/WHITE/70/S*, 20 pcs Oral Tips
6510	AFFINIS™ regular body microSystem™ 4 × 25 ml Cartridges microSystem™, 20 pcs MT/CLEAR/CLEAR/WHITE/70/S*, 20 pcs Oral Tips
6610	AFFINIS™ fast regular body microSystem™ 4 × 25 ml Cartridges microSystem™, 20 pcs MT/CLEAR/CLEAR/WHITE/70/S*, 20 pcs Oral Tips

Accessories: microSystem™

6270	Dispenser microSystem™	1 pcs
6214	MT/CLEAR/CLEAR/WHITE/70/S*	40 pcs
6215	MT/CLEAR/CLEAR/WHITE/70/S*	100 pcs
6202	MT/GREEN/GREEN/WHITE/70/S*	40 pcs
6205	MT/GREEN/GREEN/WHITE/70/S*	100 pcs
6210	Oral Tips	100 pcs

* MT = Mixing Tip
P = Pointed
S = Straight

Coltène/Whaledent AG

Feldwiesenstrasse 20
9450 Altstätten/Switzerland
Tel. +41 (0)71 757 53 00
Fax +41 (0)71 757 53 01
office@coltenewhaledent.ch

Coltène/Whaledent Inc.

235 Ascot Parkway
Cuyahoga Falls, Ohio 44223/USA
Tel. +1 330 916 8800
Fax +1 330 916 7077
productinfo@coltenewhaledent.com

coltène
whaledent