

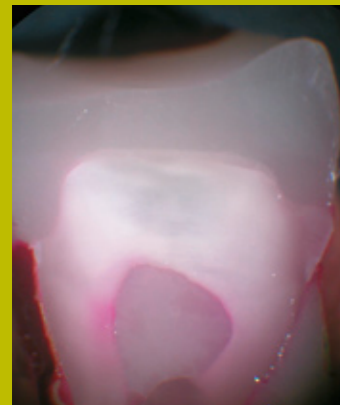


# ParaBond®

ParaBond consists of a Non-Rinse Conditioner and a chemical cured Adhesive, which is ideal for situations where light might not penetrate, such as for post cementation. The adhesive system ideally complements ParaCore to ensure for long-lasting post & core restorations with outstanding sealing properties, an optimal bond interface and excellent retention.

## WHY WE STILL BOND?

- Effectively seals and protects the restoration against marginal microleakage to minimize the risk of postoperative complications.
- Delivers high shear bond strength to dentin and enamel for reliable, long-lasting adhesive cementation.
- Creates an optimal bond interface between the dentin-cement-post to enhance retention of the post inside the root canal.

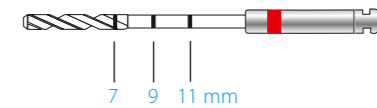


Cementation with ParaBond.

1) Dr. B. Millar, Dr. S. Deb, King's College London Dental Institute, Oct. 2008

## Ordering Information

### ParaPost® FIBER LUX™



#### PF 170 ParaPost® Fiber Lux™ Intro Kit

2 Posts, 1 Fiber Lux Drill,	Size 3,	Brown,	(Ø 0.90 mm)
3 Posts, 1 Fiber Lux Drill,	Size 4,	Yellow,	(Ø 1.00 mm)
3 Posts, 1 Fiber Lux Drill,	Size 4.5,	Blue,	(Ø 1.14 mm)
3 Posts, 1 Fiber Lux Drill,	Size 5,	Red,	(Ø 1.25 mm)
2 Posts, 1 Fiber Lux Drill,	Size 5.5,	Purple,	(Ø 1.40 mm)
2 Posts, 1 Fiber Lux Drill,	Size 6,	Black,	(Ø 1.50 mm)
1 Universal Hand Driver			

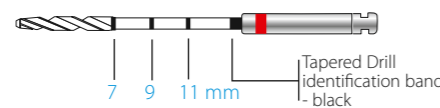
#### ParaPost® Fiber Lux™ Refills (5 Posts/Refill):

PF 171 3	Size 3,	Brown,	(Ø 0.90 mm)
PF 171 4	Size 4,	Yellow,	(Ø 1.00 mm)
PF 171 45	Size 4.5,	Blue,	(Ø 1.14 mm)
PF 171 5	Size 5,	Red,	(Ø 1.25 mm)
PF 171 55	Size 5.5,	Purple,	(Ø 1.40 mm)
PF 171 6	Size 6,	Black,	(Ø 1.50 mm)

#### ParaPost® Fiber Lux™ Drill Refills (parallel design; compatible with all ParaPost® Posts)

P 42 3	3 ParaPost® X™ System Drills,	Size 3,	Brown,	(Ø 0.90 mm)
P 42 4	3 ParaPost® X™ System Drills,	Size 4,	Yellow,	(Ø 1.00 mm)
P 42 45	3 ParaPost® X™ System Drills,	Size 4.5,	Blue,	(Ø 1.14 mm)
P 42 5	3 ParaPost® X™ System Drills,	Size 5,	Red,	(Ø 1.25 mm)
P 42 55	3 ParaPost® X™ System Drills,	Size 5.5,	Purple,	(Ø 1.40 mm)
P 42 6	3 ParaPost® X™ System Drills,	Size 6,	Black,	(Ø 1.50 mm)
P 42 A	6 ParaPost® X™ System Drills,	1 of Size (3 to 6)		

### ParaPost® TAPER LUX™



#### PF 180 ParaPost® Taper Lux™ Intro Kit

5 Posts, 1 Taper Lux Drill,	Size 4.5,	Blue,	(Ø 1.14 mm)
5 Posts, 1 Taper Lux Drill,	Size 5,	Red,	(Ø 1.25 mm)
3 Posts, 1 Taper Lux Drill,	Size 5.5,	Purple,	(Ø 1.40 mm)
2 Posts, 1 Taper Lux Drill,	Size 6,	Black,	(Ø 1.50 mm)
1 Universal Hand Driver			

#### ParaPost® Taper Lux™ Refills (5 Posts/Refill):

PF 181 45	Size 4.5,	Blue,	(Ø 1.14 mm)
PF 181 5	Size 5,	Red,	(Ø 1.25 mm)
PF 181 55	Size 5.5,	Purple,	(Ø 1.40 mm)
PF 181 6	Size 6,	Black,	(Ø 1.50 mm)

#### ParaPost® Taper Lux™ Drill Refills (tapered design; only compatible with ParaPost® Taper Lux™ Posts)

P 82 45	3 ParaPost® Taper Lux Drills,	Size 4.5,	Blue,	(Ø 1.14 mm)
P 82 5	3 ParaPost® Taper Lux Drills,	Size 5,	Red,	(Ø 1.25 mm)
P 82 55	3 ParaPost® Taper Lux Drills,	Size 5.5,	Purple,	(Ø 1.40 mm)
P 82 6	3 ParaPost® Taper Lux Drills,	Size 6,	Black,	(Ø 1.50 mm)
P 82 A	4 ParaPost® Taper Lux Drills,	1 of Size (4.5 to 6)		

## ParaCore®

#### ParaCore 5 ml Syringe:

5885 ParaCore Intro Kit	2 x 5 ml ParaCore syringe dentin
	2 x 5 ml ParaCore syringe white
	3 x 3 ml ParaBond Non-Rinse Conditioner + Adhesive A & B
	20 x Mixing / Root Canal Tips

#### 5886 ParaCore Refill - white

2 x 5 ml ParaCore syringe white
20 x Mixing / Root Canal Tips

#### 5887 ParaCore Refill - dentin

2 x 5 ml ParaCore syringe dentin
20 x Mixing / Root Canal Tips

#### 6747 Mixing / Root Canal Tips

40 x Mixing Tip Brown short super fine
--

#### 6759 Mixing Tips

40 x Mixing Tip Brown short fine
----------------------------------



#### ParaCore 25 ml Cartridge:

1500 ParaCore Intro Kit - dentin + dispenser	1 x 25 ml ParaCore cartridge dentin
	3 x 3 ml ParaBond Non-Rinse Conditioner + Adhesive A & B
	20 x Mixing Tips & Oral Tips

#### 1501 ParaCore Intro Kit - dentin

1 x 25 ml ParaCore cartridge dentin
3 x 3 ml ParaBond Non-Rinse Conditioner + Adhesive A & B
20 x Mixing Tips & Oral Tips

#### 1502 ParaCore Intro Kit - white + dispenser

1 x 25 ml ParaCore cartridge white
3 x 3 ml ParaBond Non-Rinse Conditioner + Adhesive A & B
20 x Mixing Tips & Oral Tips

#### 1503 ParaCore Intro Kit - white

1 x 25 ml ParaCore cartridge white
3 x 3 ml ParaBond Non-Rinse Conditioner + Adhesive A & B
20 x Mixing Tips & Oral Tips

#### 5853 ParaCore Refill - dentin

2 x 25 ml ParaCore syringe dentin
20 x Mixing Tips & Oral Tips

#### 5854 ParaCore Refill - white

2 x 25 ml ParaCore syringe white
20 x Mixing Tips & Oral Tips

#### 6550 Mixing Tips

40 x Mixing Tips Yellow
-------------------------

#### 6555 Oral Tips

100 x Oral Tips
-----------------

#### 4470 Dispenser



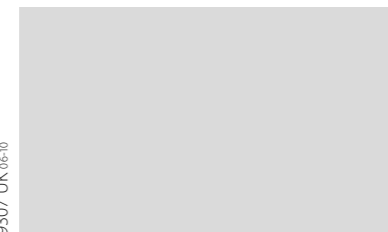
## ParaForm®

5860 ParaForm Complete Set	50 assorted Coreformers in 10 Sizes
5861 ParaForm Sample Kit	10 assorted Coreformers
5871 - 5880 ParaForm Refill # 1 - # 10	Each size individually available in 10 pcs. / pack

## ParaBond®

7486 ParaBond Adhesive	3 x 3 ml ParaBond Non-Rinse Conditioner + Adhesive A & B
7493 ParaBond Adhesive A&B Refill	2 x 3 ml ParaBond Adhesive A & B
7494 ParaBond Non-Rinse Conditioner Refill	1 x 3 ml ParaBond Non-Rinse Conditioner

www.coltenewhaledent.com  
© 2010 Coltène/Whaledent



#### Coltène/Whaledent Ltd.

The President Suite-A  
Kendal House, Burgess Hill  
Victoria Way  
West Sussex, RH15 9NF/U.K.  
Tel. +44 (0)1444 235486  
Fax +44 (0)1444 870640  
info@coltenewhaledent.co.uk

#### Coltène/Whaledent Inc.

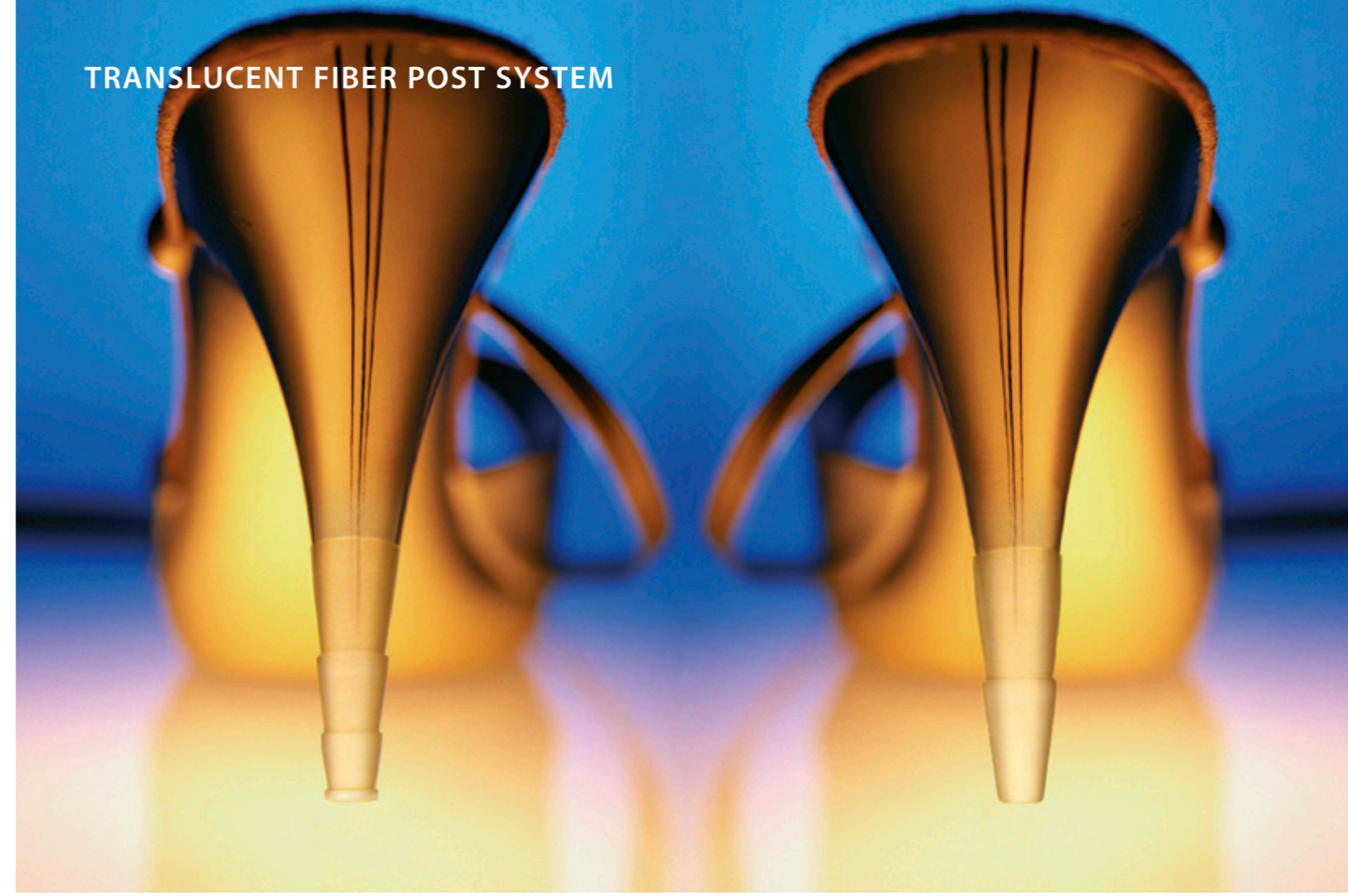
235 Ascot Parkway  
Cuyahoga Falls, Ohio 44223/USA  
Tel. +1 330 916 8800  
Fax +1 330 916 7077  
info@coltenewhaledent.com

#### Coltène/Whaledent AG

Feldwiesenstrasse 20  
9450 Altstätten/Switzerland  
Tel. +41 (0)71 757 53 00  
Fax +41 (0)71 757 53 01  
info@coltenewhaledent.ch



## TRANSLUCENT FIBER POST SYSTEM



ParaPost® Fiber Posts  
Esthetics requires a solid base.



# The complete esthetic post & core system

Over the past decade, Coltène/Whaledent has delivered clinically successful esthetic post and core systems with components designed to optimally compliment each other. The ParaPost® Esthetic System reflects upon over 4 decades of Coltène/Whaledent competence within the areas of endodontic posts, composites and bonding systems, which have provided the dental care community with clinically proven and safe solutions.

## Indication-Driven Glass Fiber Posts

### ParaPost® FIBER LUX™ Parallel Post Design



- ideal for normal-shaped root canals
- 6 color-coded sizes
- compatible with all ParaPost® Drills



### ParaPost® TAPER LUX™ Tapered Post Design



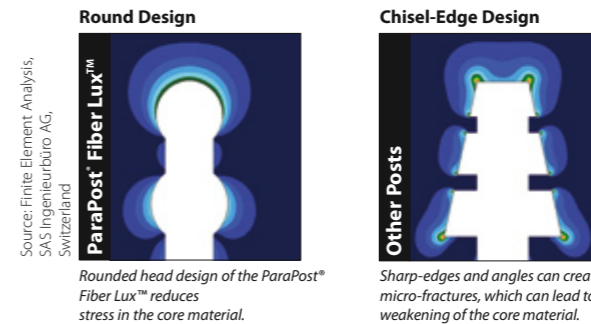
- 4% tapered design for narrow-shaped and fragile root canals
- Provides a good apical fit in canals prepared using the crown-down greater taper file technique
- 4 color-coded sizes
- Only compatible with ParaPost® Taper Lux™ Drills

4% taper

1.5 mm

## Post Head Design for Greater Stability

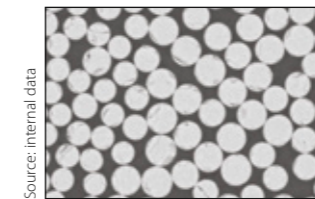
The special retention head design from ParaPost® Fiber Lux™ and Taper Lux™ is rounded with undercuts to help prevent stress in the core material. These properties remain intact, even if the post length is adjusted occlusally from its multi-head design, to allow for occlusal conformity without a problem.



Source: Finite Element Analysis, SAS Ingenieurbüro AG, Switzerland

Rounded head design of the ParaPost® Fiber Lux™ reduces stress in the core material.

Sharp-edges and angles can create micro-fractures, which can lead to weakening of the core material.



Source: internal data  
Cross section of ParaPost® Fiber Posts

## Superior Strength

The high percentage of uni-directional glass fibers ensures for excellent structural strength characteristics, without compromising its dentin-like flexibility.

Filler Composition		Physical Properties	
Glass Fiber	60 %	Flexural Strength	1600 MPa
Resin	40 %	Compressive Strength	630 MPa
		Tensile Strength	1475 MPa
		Modulus of Elasticity	45 GPa

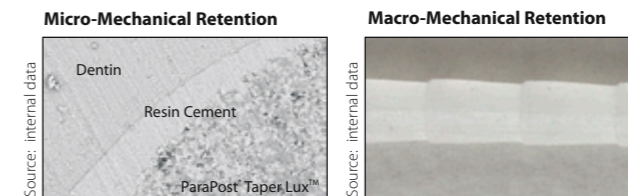
## Quick, On-Command Post Cementation

ParaPost® Fiber Lux™ and Taper Lux™ are made of a translucent, light-transmitting glass-fiber resin matrix. This allows immediate fixation to dual- and light-cured resin cements and core materials using light polymerisation, without any pre-treatment required to the post.



## Exceptional Adhesive Retention

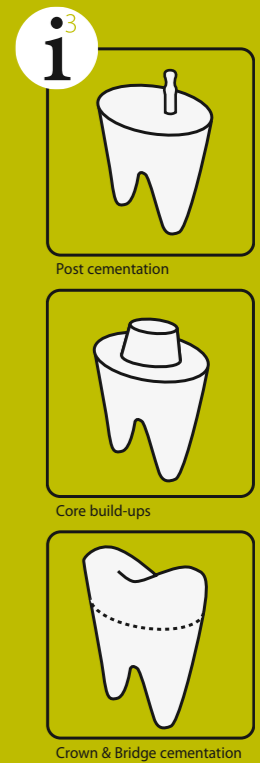
ParaPost® Fiber Lux™ and Taper Lux™ provide micro- and macro-mechanical retention to dual- and self-curing resin cements and composite-based core materials to ensure for a homogeneous restoration.



Source: internal data  
Cross section of ParaPost® Taper Lux™ Post, resin cement and dentin (713 x magnification)

Source: internal data  
ParaPost® Taper Lux™ Post with retention ledges (70 x magnification)

## DUAL CURED CORE & RESIN CEMENT

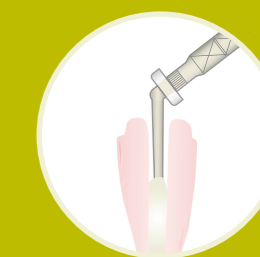


## ParaCore® 3 indications – 1 material

ParaCore® dual cured, glass-reinforced composite resin, which is radiopaque and available in two shades (dentin & white), builds upon decades of competence and experience in the area of composites, bonding technology and endodontic posts.

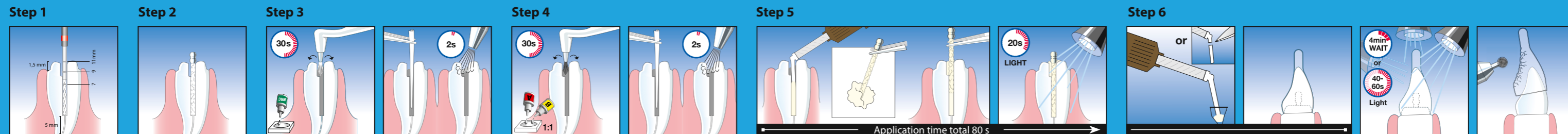
- One material for 3 indications (post cementation, core build-ups, and crown & bridge cementation)
- Comfortable mixing and dispensing
- Outstanding handling properties
- Superior and durable strength

## NEW: Faster and Easier Post Cementation



ParaCore® 5ml  
Root Canal Mixing Tip for direct application into the root canal.

## Post cementation and core build up in one



Prepare the post space using a ParaPost® Fiber Lux™ Drill.

Trial seat the ParaPost® Fiber Lux™ Post. If necessary, adjust the post length accordingly.

Condition the root canal using ParaBond® Non-Rinse Conditioner. Remove excess Non-Rinse Conditioner using paper points. Dry the root canal using a gentle stream of air.

Apply mixed ParaBond® Adhesive A and B into the prepared post space preparation. Remove excess ParaBond® Adhesive using paper points. Dry the adhesive bond layer using a gentle stream of air.

Apply ParaCore® 5ml syringe material directly into the root canal. Coat the ParaPost® Fiber Lux™ Post with the ParaCore® material and position it into the root canal. Remove excess ParaCore® material and light cure (if desired).

Fill the ParaPost® ParaForm® Coreformer with ParaCore® material. Position the filled ParaPost® ParaForm® Coreformer. Remove excess ParaCore® core material and light cure. Remove the ParaPost® ParaForm® Coreformer. Complete restoration accordingly.