

Kwik-Bite®



 Risk of Cross-Contamination
 Device
 (Order no. 1781)







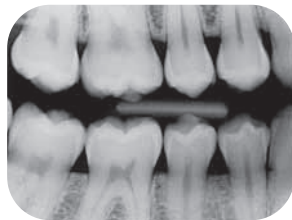
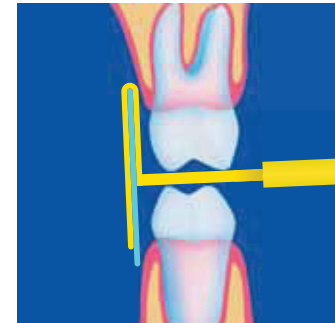
Kwik-Bite with ring
 (Order no. 1780)







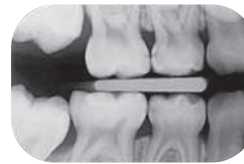
Kwik-Bite with index
 (Order no. 270)



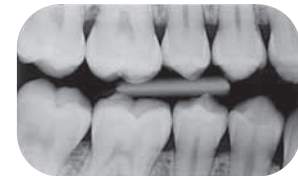
Size 2



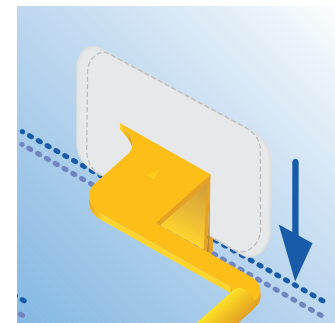
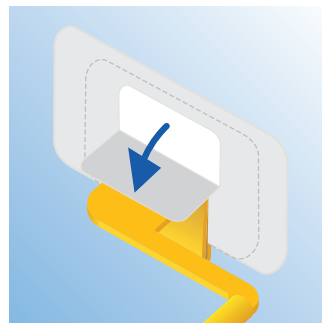
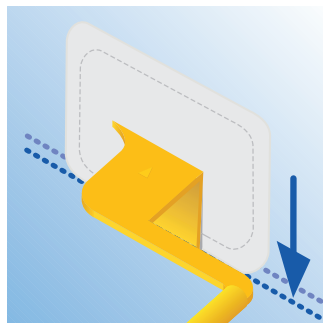
Size 3



Size 0



Size 1



504895-06-10

Manufactured by KerrHawe SA
 Via Strece 4, 6934 Bioggio
 Switzerland
 www.KerrHawe.com
 00800 41 05 05 05



Kerr U.S.A.
 1717 West Collins Avenue
 Orange, CA 92867
 (800) KERR-123
 KerrDental.com

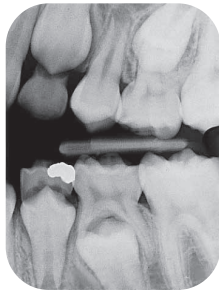
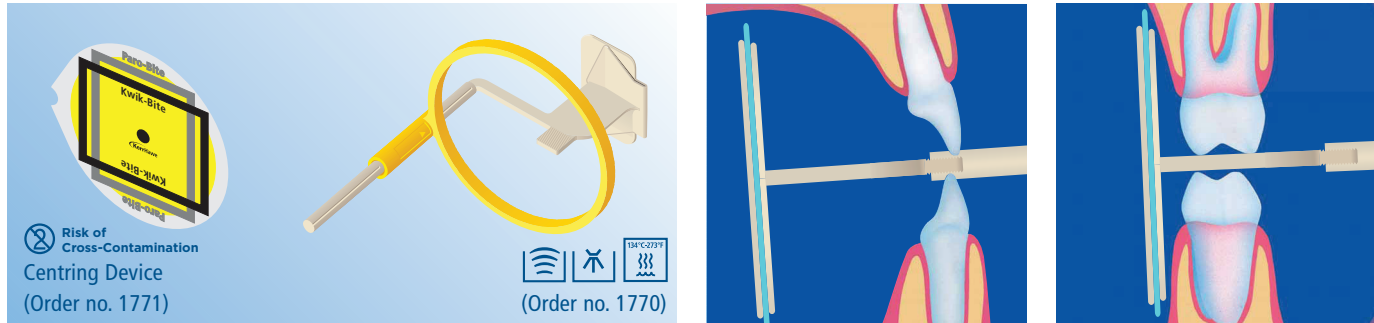
Kerr Australia Pty. Ltd.
 Unit 11
 112-118 Talavera Road
 North Ryde 2113
 New South Wales, Australia
 61-29-870-7500

Sybron Dental Specialities Japan, Inc.
 29-24 Honkomagone 2-chome
 Bunkyo-ku, Tokyo
 113-0021 Japan
 0120-18-3126

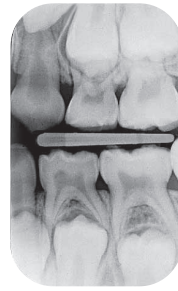
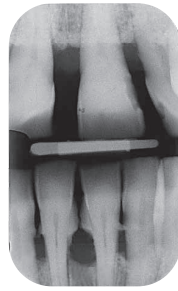
Metrex® Research
 28210 Wick Road
 Romulus, MI 48174 USA
 Phone: 001 714 516 7400
 Fax: 001 714 516 7581
 www.kerrtotalcare.com



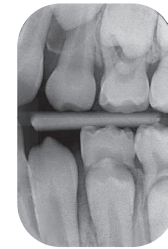
Paro-Bite®



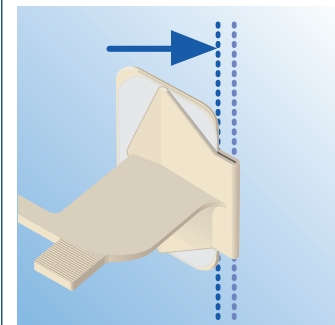
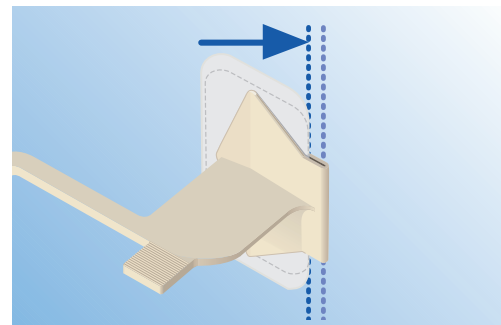
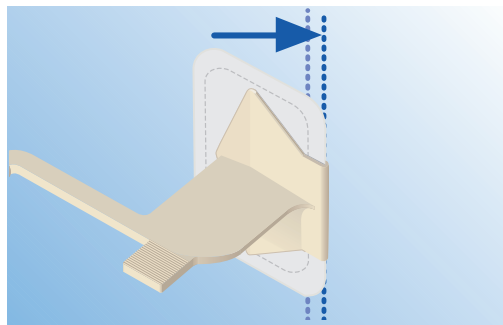
Size 2



Size 1



Size 0



Manufactured by KerrHawe SA
Via Strecce 4, 6934 Bioggio
Switzerland
www.KerrHawe.com
00800 41 05 05 05



Kerr U.S.A.
1717 West Collins Avenue
Orange, CA 92867
(800) KERR-123
KerrDental.com

Kerr Australia Pty. Ltd.
Unit 11
112-118 Talavera Road
North Ryde 2113
New South Wales, Australia
61-29-870-7500

Sybron Dental Specialities Japan, Inc.
29-24 Honkomagone 2-chome
Bunkyo-ku, Tokyo
113-0021 Japan
0120-18-3126

Metrex® Research
28210 Wick Road
Romulus, MI 48174 USA
Phone: 001 714 516 7400
Fax: 001 714 516 7581
www.kerrtotalcare.com

