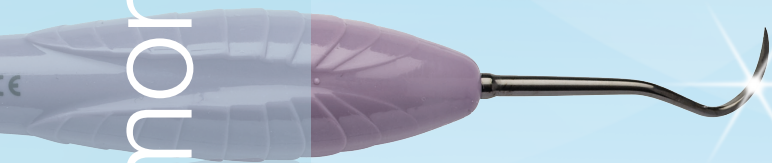


LMSharpDiamond



SHARPEN FREE
MICRO COATING



CHOOSE SHARP.

LM

feel the
difference

CHOOSE SHARP.

Opposites attract. This holds true with high-quality periodontal instruments. Optimally they are razor sharp, extremely hard, yet smooth and light. A new micro coating made using modern Physical Vapor Deposition (PVD) technology enables LM to create Sharp Diamond instruments combining these features optimally: they are completely sharpen free, tough but refined.



Scan the QR for more info & video at www.lm-dental.com/sharpdiamond



SHARPEN FREE MICRO COATING

Savings of time & money

Highest rated ergonomics with sensational grip*







Long-lasting superior sharpness

Improved productivity & clinical results

You will enjoy full control and improved tactile sense, while effectively removing the calculus.

DIAMOND-LIKE FEATURES

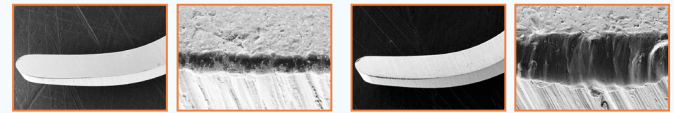
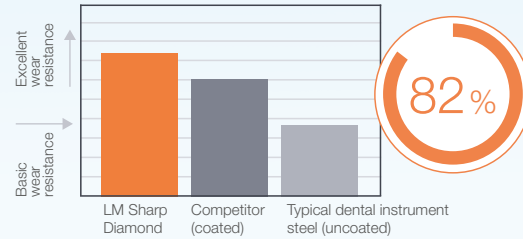
- Sharpen free 
- Superior sharpness 
- Highest rated ergonomics 
- Minimum maintenance 

HARDNESS

Hardness contributes to the durability of the instrument. Sharp Diamond reaches hardness of over 63 on Rockwell scale.



WEAR RESISTANCE**



Cutting edge of the Sharp Diamond curette and the magnification of the edge after the test.

Cutting edge of a typical non-coated curette and the magnification of the edge after the test.

Reference studies: *(1) Sormunen E., Nevala N: Evaluation of ergonomics and usability of dental scaling instruments; Dental scaling simulation and Field study, part III. Finnish Institute of Occupational Health, LM-Instruments Oy. (2) Nevala N, Sormunen E, Remes J, Suomalainen K: Ergonomic and productivity evaluation of scaling instruments in dentistry. The Ergonomics Open Journal 2013; 6, 6-12. ** Leppäniemi J. et al: The influence of PVD coatings on the wear performance of steel dental currettes. Key Engineering Materials Vol. 674 (2016), 289-295.

LMSharpDiamond - Enjoy sharpen free prophylaxis and perio

LM Sharp Diamond instruments are completely sharpen free. These instruments are made from exceptionally durable special metal alloy, and its wear resistance is enhanced by a protective micro membrane coating.



Sharpness & comfort

Sharp Diamond instruments with LM-ErgoSense handle are especially suitable for clinicians who use hand instruments frequently and want to minimize the time spent maintaining dental instruments. These instruments combine optimal characteristics of superior sharpness, tactile sensitivity and comfort.

Better instruments, better outcomes

Sharp Diamond instruments are well-suited for all forms of scaling. These instruments retain their original functionality, size and shape throughout their lifetime. The time saved from sharpening can be used for productive work and promotion of health. Choose sharp and work efficiently.

“ LMSharpJack - what a great instrument!

It has the best features you could wish for. It's very narrow and thin which allows you to enter everywhere, even in the smallest areas. Perfect that the tip is so long so you can get in between molars. My favorite without competition, I'm in love!”

Malin, Registered Dental Hygienist, Sweden



Purple Prophy & Perio

Healthy gums support a healthy brain

To raise awareness of Alzheimer's disease, LM donates funds from LM-SharpJack sales to Alzheimer research. More info at www.lm-dental.com/sharpjack



Sharpen free instrument range



Sickle Scalers

NEW

The new LM-SharpJack instrument features extra long, thin blades for convenient interproximal access presenting the most popular scaler design in US. The shank is optimally angled to universally adapt in anterior and posterior regions.

LM-SharpJack SD

- Anterior/posterior scaler
- Thin dual-edged blades for easy and efficient interproximal access

LMErgoSense

LM 315-316SD ES



Micro Sickle SD

- Anterior/posterior scaler
- Delicate working end
- Elongated shank
- Ideal for tight interproximal surfaces

LMErgoSense

LM 301-302SD ES



Mini Sickle SD

- Universal scaler
- For all tooth surfaces
- Fine, slightly angled blade

LMErgoSense

LM 311-312SD ES



Sickle LM23 SD

- Posterior scaler
- Shorter blades and longer lower shank than in Mini Sickle

LMErgoSense

LM 313-314SD ES



Scaler H6-H7 SD

- For all tooth surfaces
- Longer shank and smaller lateral bending than in LM-SharpJack

LMErgoSense

LM 146-147SD ES

Universal Curettes



Columbia 4L-4R SD

- For incisors, canines and premolars
- For heavier calculus

LMErgoSense

LM 219-220SD ES



Barnhart 5-6 SD

- For molars
- Shorter lower shank

LMErgoSense

LM 227-228SD ES

Dual Graceys

- Dual Gracey, combining the benefits of universal curettes and finishing curettes Gracey 11/12 and 13/14
- For all tooth surfaces



Syntette SD

LMErgoSense

LM 215-216SD ES



Mini Syntette SD

LMErgoSense

LM 215-216MSD ES

Gracey Curettes

- For incisors and premolars



Gracey 1/2 SD

LMErgoSense

LM 201-202SD ES



Mini Gracey 1/2 SD

LMErgoSense

LM 201-202MSD ES

- For premolars and molars
- For buccal and lingual surfaces



Gracey 7/8 SD

LMErgoSense

LM 207-208SD ES



Mini Gracey 7/8 SD

LMErgoSense

LM 207-208MSD ES

- For premolars and molars
- For mesial surfaces



Gracey 11/12 SD

LMErgoSense

LM 211-212SD ES



Mini Gracey 11/12 SD

LMErgoSense

LM 211-212MSD ES

- For premolars and molars
- For distal surfaces



Gracey 13/14 SD

LMErgoSense

LM 213-214SD ES



Mini Gracey 13/14 SD

LMErgoSense

LM 213-214MSD ES



Mini Gracey 15/16 SD

LMErgoSense

- For molars' mesial surfaces
- Blade shank more sharply angled than Mini Gracey 11/12 for better access

LM 245-246MSD ES



Mini Gracey 17/18 SD

LMErgoSense

- For molars' distal surfaces
- Blade shank more sharply angled than in Mini Gracey 13/14 for better access

LM 247-248MSD ES

“

It's great that I don't need to waste my time on sharpening any longer! Since the Sharp Diamond instruments are totally sharpen free, I can concentrate on the clinical work. I can remove calculus with controlled strokes using extremely light grip. The long-lasting sharpness really makes a difference!”



Anna, Registered Dental Hygienist, USA

LM Dental

LM-Instruments Oy

Norrbyn rantatie 8 | FI-21600 Parainen | Finland

Tel. +358 2 4546 400

info@lm-dental.com | www.lm-dental.com

Contact your local distributor!