

# Information guide

# unica proximal

focus on proximal  
focus on shape

anterior  
matrices



**polydentia**  
swiss manufacture 

## Index

<b>en</b> - ENGLISH	2	<b>da</b> - DANSK	12
<b>de</b> - DEUTSCH	3	<b>cs</b> - ČEŠTINA	13
<b>fr</b> - FRANÇAIS	4	<b>tk</b> - TÜRKÇE	14
<b>it</b> - ITALIANO	5	<b>el</b> - ΕΛΛΗΝΙΚΑ	15
<b>es</b> - ESPAÑOL	6	<b>bg</b> - БЪЛГАРСКИ	16
<b>pt</b> - PORTUGUÊS	7	<b>hu</b> - MAGYAR	17
<b>no</b> - NORSK	8	<b>lv</b> - LATVIEŠU VALODA	18
<b>et</b> - EESTIKEEL	9	<b>lt</b> - LIETUVIŲ KALBA	19
<b>fi</b> - SUOMI	10	<b>ro</b> - LIMBA ROMÂNĂ	20
<b>sv</b> - SVENSKA	11	<b>sk</b> - SLOVENČINA	21

en - Information guide



# unica proximal

in cooperation with **STYLE ITALIANO™**

## anterior matrices



Follow us  
**#thinkunica**



	Unica Proximal anterior matrices standard 0.03mm, 100 pcs	REF 6913	CE MD
	Unica Proximal anterior matrices standard 0.03mm, 50 pcs	REF 6914	CE MD
	Unica Proximal deep anterior matrices deep 0.03mm, 100 pcs	REF 6952	CE MD
	Unica Proximal deep anterior matrices deep 0.03mm, 50 pcs	REF 6953	CE MD

Use only with rubber dam - For professional use only

Polydentia SA - via Cantonale 47  
6805 Mezzovico-Vira, Switzerland  
Made in Switzerland

phone: +41 91 946 29 48 - fax: +41 91 946 32 03  
info@polydentia.ch - polydentia.ch  
f t i

### matrix selection

Choose Unica Proximal for anterior restorations involving the proximal walls



Unica Proximal

Unica Proximal deep

### clinical applications



**Class III restorations**

Clinical image courtesy of Dr. Jordi Manauta



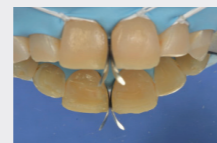
**Class IV restorations**

Clinical image courtesy of Dr. Mohammed Al Hasani



**Shape modification of a peg lateral**

Clinical image courtesy of Dr. Jordi Manauta



**Diastema closure**

Clinical image courtesy of Dr. Valentin Vervack



**Direct stratification composite veneers**

Clinical image courtesy of Dr. Osama Shaalan

### specifically for



Use Unica Proximal Deep specifically for perio application with a flat papilla

In demanding cases requiring the restoration of the cervical and proximal areas (complete veneer), use Unica anterior or Unica minideep anterior



Unica anterior

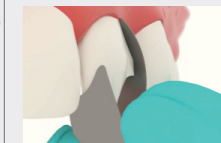


Unica minideep anterior

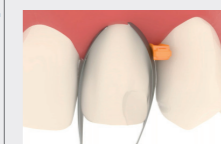
### how to position Unica proximal



1 Select the matrix and gently slide it interproximally



2 Secure the matrix between the papilla and the tooth subgingivally.



3 The use of an interproximal wedge (i.e. myWedge) to fix the matrix in position is allowed but not mandatory



# unica proximal

in cooperation with **STYLE ITALIANO™**

## Frontzahnmatrizen



Follow us  
#thinkunica



	Unica Proximal Frontzahnmatrizen standard 0.03mm, 100 Stk.	REF 6913	CE MD
	Unica Proximal Frontzahnmatrizen standard 0.03mm, 50 Stk.	REF 6914	CE MD
	Unica Proximal deep Frontzahnmatrizen deep 0.03mm, 100 Stk.	REF 6952	CE MD
	Unica Proximal deep Frontzahnmatrizen deep 0.03mm, 50 Stk.	REF 6953	CE MD

Nur mit Kofferdam verwenden - Nur für den professionellen Gebrauch

Polydentia SA - via Cantonale 47  
6805 Mezzovico-Vira, Switzerland  
Made in Switzerland

phone: +41 91 9462948 - fax: +41 91 9463203  
info@polydentia.ch - polydentia.ch

### Auswahl der Matrize

Wählen Sie Unica Proximal für Frontzahnrestaurationen im Bereich der proximalen Wände



Unica Proximal

Unica Proximal deep

### Klinische Anwendungen



#### Klasse-III-Restaurationen

Klinische Bilder mit freundlicher Genehmigung von Dr. Jordi Manauta



#### Klasse-IV-Restaurationen

Klinische Bilder mit freundlicher Genehmigung von Dr. Mohammed Al Hasani



#### Formveränderung eines zapfenförmigen lateralen Schneidezahns

Klinische Bilder mit freundlicher Genehmigung von Dr. Jordi Manauta



#### Diastema-Verschluss

Klinische Bilder mit freundlicher Genehmigung von Dr. Valentin Vervack



#### Direkt geschichtete Kompositverblendungen

Klinische Bilder mit freundlicher Genehmigung von Dr. Osama Shaalan

### das speziell für



Verwenden Sie Unica Proximal Deep, das speziell für Perio-Anwendungen mit flacher Papille konzipiert ist

In anspruchsvollen Fällen, die eine Restauration des zervikalen und proximalen Bereichs (Vollverblendung) erfordern, verwenden Sie Unica oder Unica Minideep



Unica anterior

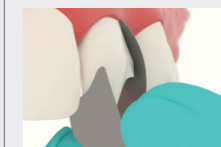


Unica minideep anterior

### Die Positionierung



1 Wählen Sie die Matrize aus und schieben Sie sie vorsichtig interproximal



2 Befestigen Sie die Matrize zwischen der Papille und dem Zahn subgingival



3 Ein interproximaler Keil (z. B. myWedge) kann zur Befestigung der Matrize verwendet werden, ist aber nicht zwingend erforderlich



# unica proximal

in cooperation with **STYLE ITALIANO™**





## matrices antérieures



Regardez la vidéo


Follow us  
**#thinkunica**



	Unica Proximal matrices antérieures standard 0.03mm, 100 pcs	REF 6913	CE MD
	Unica Proximal matrices antérieures standard 0.03mm, 50 pcs	REF 6914	CE MD
	Unica Proximal deep matrices antérieures deep 0.03mm, 100 pcs	REF 6952	CE MD
	Unica Proximal deep matrices antérieures deep 0.03mm, 50 pcs	REF 6953	CE MD

À utiliser uniquement avec une digue en caoutchouc - À usage professionnel uniquement

Polydentia SA - via Cantonale 47  
6805 Mezzovico-Vira, Switzerland  
Made in Switzerland

phone: +41 91 9462948 - fax: +41 91 9463203  
info@polydentia.ch - polydentia.ch  


### sélection de la matrice

Choisissez Unica Proximal pour les restaurations antérieures impliquant les parois proximales



Unica Proximal

Unica Proximal deep

### applications cliniques



#### Restaurations de classe III

Images cliniques avec l'aimable autorisation du Dr. Jordi Manauta



#### Restaurations de classe IV

Images cliniques avec l'aimable autorisation du Dr. Mohammed Al Hasani



#### Modification de la forme d'une incisive latérale riziforme

Images cliniques avec l'aimable autorisation du Dr. Jordi Manauta



#### Fermeture de diastème

Images cliniques avec l'aimable autorisation du Dr. Valentin Vervack



#### Facettes composites par stratification directe

Images cliniques avec l'aimable autorisation du Dr. Osama Shaalan

### spécialement pour



Utilisez Unica Proximal Deep conçu tout spécialement pour applications Péro avec une papille plate

Dans les cas difficiles exigeant la restauration des zones cervicales et proximales (facette complète), utiliser Unica ou Unica Minideep



Unica anterior

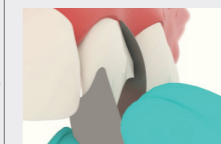


Unica minideep anterior

### comment positionner



1 Sélectionner la matrice et la faire glisser doucement en position interproximale



2 Fixer la matrice entre la papille et la dent au niveau sous-gingival.



3 Un coin interproximal (ex. myWedge) peut être utilisé pour fixer la matrice mais ce n'est pas obligatoire

it - Guida informativa



# unica proximal

in cooperation with **STYLE ITALIANO™**

## matrici anteriori



Follow us  
**#thinkunica**



	Unica Proximal matrici anteriori standard 0.03mm, 100 pz	REF 6913	CE MD
	Unica Proximal matrici anteriori standard 0.03mm, 50 pz	REF 6914	CE MD
	Unica Proximal deep matrici anteriori deep 0.03mm, 100 pz	REF 6952	CE MD
	Unica Proximal deep matrici anteriori deep 0.03mm, 50 pz	REF 6953	CE MD

Usare solo con diga in gomma - Solo per uso professionale

Polydentia SA - via Cantonale 47  
6805 Mezzovico-Vira, Switzerland  
Made in Switzerland

phone: +41 91 9462948 - fax: +41 91 9463203  
info@polydentia.ch - polydentia.ch

### selezione della matrice

Scegliere Unica Proximal per i restauri anteriori che coinvolgono le pareti prossimali



Unica Proximal

Unica Proximal deep

### applicazioni cliniche



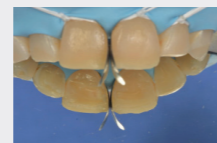
**Restauri di classe III**  
Immagine clinica per gentile concessione del Dr. Jordi Manauta



**Restauri di classe IV**  
Immagine clinica per gentile concessione del Dr. Mohammed Al Hasani



**Rimodellamento di un incisivo laterale conoide**  
Immagine clinica per gentile concessione del Dr. Jordi Manauta



**Chiusura del diastema**  
Immagine clinica per gentile concessione del Dr. Valentin Vervack



**Faccette in composito a stratificazione diretta**  
Immagine clinica per gentile concessione del Dr. Osama Shaalan

### appositamente per



Utilizzare Unica Proximal Deep, progettata appositamente per applicazioni parodontali con papilla piatta

Nei casi più impegnativi che richiedono il restauro delle aree cervicali e prossimali (faccette complete), utilizzare Unica o Unica Minideep



Unica anterior

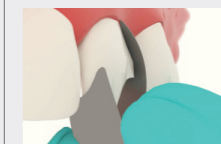


Unica minideep anterior

### come posizionare Unica Proximal



1 Selezionare la matrice e farla scorrere delicatamente a livello interprossimale



2 Fissare la matrice tra la papilla e il dente a livello sottogengivale



3 Per fissare la matrice è possibile utilizzare un cuneo interprossimale (es. myWedge), ma non è obbligatorio.

es - Guía informativa



# unica proximal

in cooperation with **STYLE ITALIANO™**

## matrices anteriores



mirar el video

Follow us  
#thinkunica



	Unica Proximal matrices anteriores standard 0.03mm, 100 uds.	REF 6913	CE MD
	Unica Proximal matrices anteriores standard 0.03mm, 50 uds.	REF 6914	CE MD
	Unica Proximal deep matrices anteriores deep 0.03mm, 100 uds.	REF 6952	CE MD
	Unica Proximal deep matrices anteriores deep 0.03mm, 50 uds.	REF 6953	CE MD

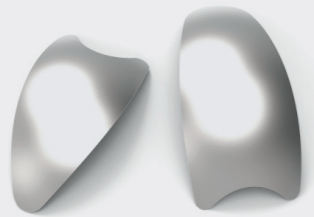
Usar solo con dique de goma - Solo para uso profesional

Polydentia SA - via Cantonale 47  
6805 Mezzovico-Vira, Switzerland  
Made in Switzerland

phone: +41 91 9462948 - fax: +41 91 9463203  
info@polydentia.ch - polydentia.ch  
f t in

### selección de matrices

Elija Unica Proximal para restauraciones anteriores que afecten a las paredes proximales



Unica Proximal

Unica Proximal deep

### aplicaciones clínicas



Restauraciones de clase III

Imágenes clínicas por cortesía del Dr. Jordi Manauta



Restauraciones de clase IV

Imágenes clínicas por cortesía del Dr. Mohammed Al Hasani



Modificación de forma de un incisivo lateral en clavija

Imágenes clínicas por cortesía del Dr. Jordi Manauta



Cierre de diastema

Imágenes clínicas por cortesía del Dr. Valentin Vervack



Carillas de composite con técnica estratificada directa

Imágenes clínicas por cortesía del Dr. Osama Shaalan

### específicamente para



Utilice Unica Proximal Deep, diseñada específicamente para aplicaciones periodontales con papila plana

En casos exigentes que requieran la restauración de las zonas cervical y proximal (carilla completa), utilice Unica o Unica Minideep



Unica anterior

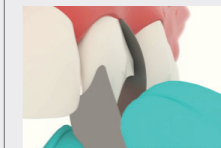


Unica minideep anterior

### cómo colocar Unica Proximal



1 Seleccione la matriz y deslícela suavemente de forma interproximal



2 Fije la matriz entre la papila y el diente subgingivalmente.



3 Se puede utilizar una cuña interproximal (por ejemplo, myWedge) para fijar la matriz, pero no es obligatorio.

pt - Guia de informação



# unica proximal

in cooperation with **STYLE ITALIANO™**

## matrizes anteriores



ver o vídeo

Follow us  
#thinkunica



	Unica Proximal matrizes anteriores standard 0.03mm, 100 peças	REF 6913	CE MD
	Unica Proximal matrizes anteriores standard 0.03mm, 50 peças	REF 6914	CE MD
	Unica Proximal deep matrizes anteriores deep 0.03mm, 100 peças	REF 6952	CE MD
	Unica Proximal deep matrizes anteriores deep 0.03mm, 50 peças	REF 6953	CE MD

Usar apenas com dique de borracha - Exclusivamente para utilização profissional

Polydentia SA - via Cantonale 47  
6805 Mezzovico-Vira, Switzerland  
Made in Switzerland

phone: +41 91 9462948 - fax: +41 91 9463203  
info@polydentia.ch - polydentia.ch

### seleção da matriz

Escolha Unica Proximal para restaurações anteriores que envolvem as paredes proximais



Unica Proximal

Unica Proximal deep

### aplicações clínicas



Restaurações de classe III

Imagem clínica por cortesia do Dr. Jordi Manauta



Restaurações de classe IV

Imagem clínica por cortesia do Dr. Mohammed Al Hasani



Remodelação de incisivo lateral conoide

Imagem clínica por cortesia do Dr. Jordi Manauta



Fecho do diastema

Imagem clínica por cortesia do Dr. Valentin Vervack



Facetas de compósito com estratificação direta

Imagem clínica por cortesia do Dr. Osama Shaalan

### especificamente para



Utilize Unica Proximal Deep, concebida especificamente para aplicações periodontais com papila plana

Nos casos mais difíceis que exigem a restauração das áreas cervicais e proximais (facetas completas), utilize Unica ou Unica Minideep



Unica anterior

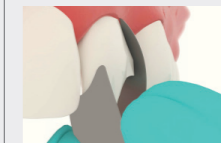


Unica minideep anterior

### como posicionar a matriz



1 Selecionar a matriz e deslizá-la delicadamente de forma interproximal



2 Fixar a matriz entre a papila e o dente, subgingivalmente.



3 É possível, mas não obrigatório, utilizar uma cunha interproximal (por ex. myWedge) para fixar a matriz

no - Informasjonsveiledning



# unica proximal

in cooperation with **STYLE ITALIANO™**

## anteriore matriser



Follow us  
#thinkunica



	Unica Proximal anteriore matriser standard 0.03mm, 100 stk	REF 6913	CE MD
	Unica Proximal anteriore matriser standard 0.03mm, 50 stk	REF 6914	CE MD
	Unica Proximal deep anteriore matriser deep 0.03mm, 100 stk	REF 6952	CE MD
	Unica Proximal deep anteriore matriser deep 0.03mm, 50 stk	REF 6953	CE MD

Skal kun brukes med kofferdam - Kun til profesjonell bruk

Polydentia SA - via Cantonale 47  
6805 Mezzovico-Vira, Switzerland  
Made in Switzerland

phone: +41 91 9462948 - fax: +41 91 9463203  
info@polydentia.ch - polydentia.ch

### valg av matrise

Velg Unica Proximal for fremre restaureringer som involverer de proksimale veggene



Unica Proximal

Unica Proximal deep

### kliniske anvendelser



#### Klasse III-restaureringer

Kliniske bilder gjengitt med tillatelse fra Dr. Jordi Manauta



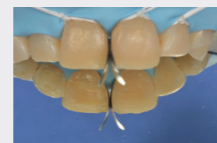
#### Klasse IV-restaureringer

Kliniske bilder gjengitt med tillatelse fra Dr. Mohammed Al Hasani



#### Omforming av en tappformet lateral fortann

Kliniske bilder gjengitt med tillatelse fra Dr. Jordi Manauta



#### Lukking av diastema

Kliniske bilder gjengitt med tillatelse fra Dr. Valentin Vervack



#### Direkte stratifisering av komposittfasader

Kliniske bilder gjengitt med tillatelse fra Dr. Osama Shaalan

### spesielt utviklet for



Bruk Unica Proximal Deep som er spesielt utviklet for perio-applikasjoner med en flat papille

I vanskelige tilfeller som krever restaurering av cervikale og proksimale områder (komplett fasade), bruk Unica eller Unica Minideep



Unica anterior

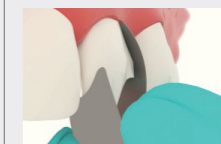


Unica minideep anterior

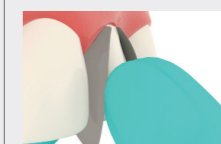
### hvordan plassere Unica Proximal



1 Velg matrisen og skyv den forsiktig interproksimalt



2 Fest matrisen mellom papillen og tannen subgingivalt.



3 En interproksimal kile (feks. myWedge) kan brukes til å feste matrisen, men det er ikke obligatorisk





# unica proximal

in cooperation with **STYLE ITALIANO™**

## eesmised maatriksid



vaata  
videot


Follow us  
**#thinkunica**



	Unica Proximal eesmised maatriksid standard 0.03mm, 100 pcs	REF 6913	CE MD
	Unica Proximal eesmised maatriksid standard 0.03mm, 50 pcs	REF 6914	CE MD
	Unica Proximal deep eesmised maatriksid deep 0.03mm, 100 pcs	REF 6952	CE MD
	Unica Proximal deep eesmised maatriksid deep 0.03mm, 50 pcs	REF 6953	CE MD

Kasutage ainult koos kummitammiga - Ainult professionaalseks kasutamiseks

Polydentia SA - via Cantonale 47  
6805 Mezzovico-Vira, Switzerland  
Made in Switzerland

phone: +41 91 9462948 - fax: +41 91 9463203  
info@polydentia.ch - polydentia.ch  


### maatriksi valik

Valige Unica Proximal proksimaalseid seinu hõlmavate eesmise restauratiivsete taastamiste jaoks



Unica Proximal

Unica Proximal deep

### kliinilised kasutusosalad



III klassi restauratiivne taastamine

Kliiniline pilt: Dr. Jordi Manauta



IV klassi restauratiivne taastamine

Kliiniline pilt: Dr. Mohammed Al Hasani



Pulgakujulise külgmise löikehamba ümberkujundamine

Kliiniline pilt: Dr. Jordi Manauta



Diasteemi sulgemine

Kliiniline pilt: Dr. Valentin Vervack



Otsese kihistumisega komposiitvineerid

Kliiniline pilt: Dr. Osama Shaalan

### konkreetselt



Kasutage Unica Proximal Deepi, mis on mõeldud spetsiaalselt lamea papilliga periokasutuseks

Keerilistel juhtudel, kui on vaja restaureerida kaela- ja proksimaalseid piirkondi (täielik vineer), kasutage lahendust Unica või Unica Minideep

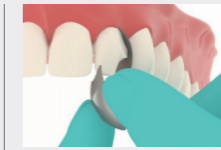


Unica anterior

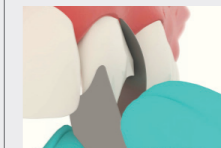


Unica minideep anterior

### kuidas paigutada Unica Proximali



1 Valige maatriks ja libistage seda ettevaatlikult interproksimaalselt



2 Kinnitage maatriks subgingivaalselt papilla ja hamba vahele.



3 Maatriksi kinnitamiseks saab kasutada interproksimaalkiilu (nt myWedge), kuid see ei ole kohustuslik

# unica proximal

in cooperation with **STYLE ITALIANO™**

## etummaiset matriisit



	Unica Proximal etummaiset matriisit standard 0.03mm, 100 pcs	REF 6913	CE MD
	Unica Proximal etummaiset matriisit standard 0.03mm, 50 pcs	REF 6914	CE MD
	Unica Proximal deep etummaiset matriisit deep 0.03mm, 100 pcs	REF 6952	CE MD
	Unica Proximal deep etummaiset matriisit deep 0.03mm, 50 pcs	REF 6953	CE MD

Käytä vain kumipadon kanssa - Vain ammattikäyttöön.



katso video

Follow us  
#thinkunica

Polydentia SA - via Cantonale 47  
6805 Mezzovico-Vira, Switzerland  
Made in Switzerland

phone: +41 91 946 29 48 - fax: +41 91 946 32 03  
info@polydentia.ch - polydentia.ch

### matriisin valinta

Valitse Unica Proximal proksimaalisia seinämiä sisältäviin anteriorisiin restauraatioihin



Unica Proximal

Unica Proximal deep

### kliiniset sovellukset



#### Luokan III restauroinnit

Kliiniset kuvat, jotka on saatu tohtori Jordi Manautalta



#### Luokan IV restauroinnit

Kliiniset kuvat, jotka on saatu tohtori Mohammed Al Hasanilta



#### Tappimaisten sivuetuhampaiden uudelleenmuotoilu

Kliiniset kuvat, jotka on saatu tohtori Jordi Manautalta



#### Diasteeman sulkeminen

Kliiniset kuvat, jotka on saatu tohtori Valentin Vervackilta



#### Suora kerrostus, komposiittiwiilut

Kliiniset kuvat, jotka on saatu tohtori Osama Shaalanilta

### joka on suunniteltu erityisesti



Käytä Unica Proximal Deep -tuotetta, joka on suunniteltu erityisesti perio-sovelluksiin, joissa on litteä papilla

Vaativissa tapauksissa, jotka edellyttävät servikaali- ja proksimaalialueiden restaurointia (täydellinen viilu), käytetään Unica- tai Unica Minideep -tuotetta



Unica anterior

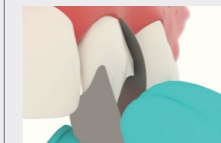


Unica minideep anterior

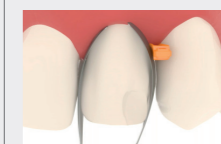
### Unica Proximal -tuotteen asettaminen



1 Valitse matriisi ja liu'uta sitä varovasti interproksimaalisesti



2 Kiinnitä matriisi papillan ja hampaan väliin subgingivaalisesti.



3 Matriisin kiinnittämiseen voidaan käyttää interproksimaalista kiilaa (esim. myWedge), mutta sen käyttö ei ole pakollista



# unica proximal

in cooperation with **STYLE ITALIANO™**

## anteriora matriser




titta på videon

Follow us  
**#thinkunica**

	Unica Proximal anteriora matriser standard 0.03mm, 100 pcs	REF 6913	CE MD
	Unica Proximal anteriora matriser standard 0.03mm, 50 pcs	REF 6914	CE MD
	Unica Proximal deep anteriora matriser deep 0.03mm, 100 pcs	REF 6952	CE MD
	Unica Proximal deep anteriora matriser deep 0.03mm, 50 pcs	REF 6953	CE MD

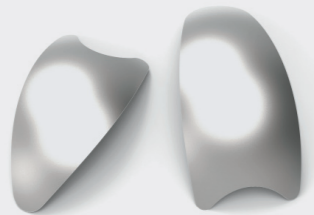
Använd endast med kofferddam - Endast för professionellt bruk

Polydentia SA - via Cantonale 47  
6805 Mezzovico-Vira, Switzerland  
Made in Switzerland

phone: +41 91 9462948 - fax: +41 91 9463203  
info@polydentia.ch - polydentia.ch  


### matrisval

Välj Unica Proximal för främre restaurationer som omfattar de proximala väggarna



Unica Proximal

Unica Proximal deep

### kliniska tillämpningar



#### Klass III-restaureringar

Clinical image courtesy of Dr. Jordi Manauta



#### Klass IV-restaureringar

Clinical image courtesy of Dr. Mohammed Al Hasani



#### Omformning av en pinnformad lateral framtand

Klinisk bild med tillstånd av Dr. Jordi Manauta



#### Slutning diastema

Klinisk bild med tillstånd av Dr. Valentin Vervack



#### Kompositveeners med direkt stratifiering

Klinisk bild med tillstånd av Dr. Osama Shaalan

### särskilt utformad för



Använd Unica Proximal Deep särskilt utformad för perio-applikationer med en platt papill

I fall där det krävs restaurering av cervikala och proximala områden (full veener), använd Unica eller Unica Minideep



Unica anterior

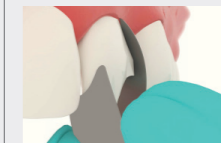


Unica minideep anterior

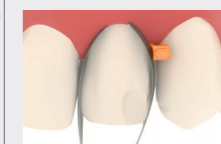
### hur man placerar Unica Proximal



1 Välj matrisen och skjut den försiktigt interproximalt



2 Fäst matrisen mellan papillen och tanden subgingivalt.



3 En interproximal kil (t.ex. myWedge) kan användas för att säkra matrisen, men det är inte obligatoriskt

da - Informationsvejledning



# unica proximal

in cooperation with **STYLE ITALIANO™**

## anteriore matricer



Se videoen

Follow us  
#thinkunica



	Unica Proximal anteriore matricer standard 0.03mm, 100 pcs	REF 6913	CE MD
	Unica Proximal anteriore matricer standard 0.03mm, 50 pcs	REF 6914	CE MD
	Unica Proximal deep anteriore matricer deep 0.03mm, 100 pcs	REF 6952	CE MD
	Unica Proximal deep anteriore matricer deep 0.03mm, 50 pcs	REF 6953	CE MD

Må kun anvendes med en kofferdam - Kun til professionel brug

Polydentia SA - via Cantonale 47  
6805 Mezzovico-Vira, Switzerland  
Made in Switzerland

phone: +41 91 9462948 - fax: +41 91 9463203  
info@polydentia.ch - polydentia.ch  
f t i n

### valg af matrice

Vælg Unica Proximal til anteriore restaureringer, der involverer de proksimale vægge



Unica Proximal

Unica Proximal deep

### kliniske anvendelser



#### Klasse III-restaureringer

Kliniske billeder venligst udlånt af Dr. Jordi Manauta



#### Klasse IV-restaureringer

Kliniske billeder venligst udlånt af Dr. Mohammed Al Hasani



#### Omformning af en stiftformet lateral fortand

Kliniske billeder venligst udlånt af Dr. Jordi Manauta



#### Lukning af diastema

Kliniske billeder venligst udlånt af Dr. Valentin Vervack



#### Direkte stratificering af kompositfacader

Kliniske billeder venligst udlånt af Dr. Osama Shaalan

### designet specifikt til



Brug Unica Proximal Deep designet specifikt til perio-applikationer med en flad papil

I tilfælde hvor der kræves en restaurering af cervikale og proksimale områder (komplet facade), skal du bruge Unica eller Unica Minideep



Unica anterior

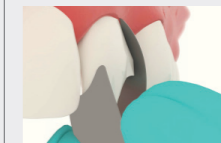


Unica minideep anterior

### sådan placerer du Unica Proximal



1 Vælg matricen, og skub dem forsigtigt på tværs af hinanden



2 Fastgør matricen mellem papillen og tanden subgingivalt



3 En interproximal kile (f.eks. myWedge) kan bruges til at fastgøre matricen, men det er ikke obligatorisk

cs - Informativní průvodce



# unica proximal

in cooperation with **STYLE ITALIANO™**

## přední matrice



Podívejte se na video

Follow us  
#thinkunica



	Unica Proximal přední matrice standard 0.03mm, 100 pcs	REF 6913	CE MD
	Unica Proximal přední matrice standard 0.03mm, 50 pcs	REF 6914	CE MD
	Unica Proximal deep přední matrice deep 0.03mm, 100 pcs	REF 6952	CE MD
	Unica Proximal deep přední matrice deep 0.03mm, 50 pcs	REF 6953	CE MD

Používejte pouze s kofferdammem - Pouze pro profesionální použití

Polydentia SA - via Cantonale 47  
6805 Mezzovico-Vira, Switzerland  
Made in Switzerland

phone: +41 91 9462948 - fax: +41 91 9463203  
info@polydentia.ch - polydentia.ch

### výběr matric

Pro frontální výplně zahrnující proximální plochy zvolte Unica Proximal



Unica Proximal

Unica Proximal deep

### klinické aplikace



#### Výplně třídy III

Klinické snímky s laskavým svolením Dr. Jordiho Manauty



#### Výplně třídy IV

Klinické snímky s laskavým svolením Dr. Mohammeda Al Hasaniho



#### Změna tvaru čípkovitého laterálního řezáku

Klinické snímky s laskavým svolením Dr. Jordiho Manauty



#### Uzávěr diastematu

Klinické snímky s laskavým svolením Dr. Valentína Vervacka



#### Kompozitní fazety s přímým vrstvením

Klinické snímky s laskavým svolením Dr. Osamy Shaalana

### určenou speciálně pro



Použijte matrici Unica Proximal Deep určenou speciálně pro paradontologické aplikace s plochou papilou.

V náročných případech vyžadujících obnovu krčků a proximálních ploch (kompletní fazeta) použijte matrici Unica nebo Unica Minideep.

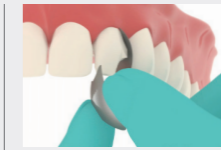


Unica anterior

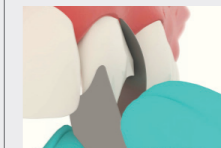


Unica minideep anterior

### jak umístit matrici Unica Proximal



1 Vyberte matrici a jemně ji posuňte do její interproximální oblasti



2 Zajištěte matrici mezi papilou a zubem subgingiválně



3 K zajištění matrice lze použít interproximální klín (např. myWedge), ale není to nutné.

tk - Bilgi kılavuzu



# unica proximal

in cooperation with STYLE ITALIANO™

## anterior matrisler



	Unica Proximal anterior matrisler standard 0.03mm, 100 pcs	REF 6913	CE MD
	Unica Proximal anterior matrisler standard 0.03mm, 50 pcs	REF 6914	CE MD
	Unica Proximal deep anterior matrisler deep 0.03mm, 100 pcs	REF 6952	CE MD
	Unica Proximal deep anterior matrisler deep 0.03mm, 50 pcs	REF 6953	CE MD

Yalnızca rubber dam ile birlikte kullanılır - Yalnızca profesyonel kullanım içindir

polydentia  
swiss manufacture



videoyu  
izleyin

Follow us  
#thinkunica

Polydentia SA - via Cantonale 47  
6805 Mezzovico-Vira, Switzerland  
Made in Switzerland

phone: +41 91 9462948 - fax: +41 91 9463203  
info@polydentia.ch - polydentia.ch

### matris seçimi

Proksimal duvarları içeren anterior restorasyonlar için Unica Proximal'i seçin



Unica Proximal

Unica Proximal deep

### kllinik uygulamalar



#### Sınıf III restorasyonlar

Dr. Jordi Manauta'nın klinik görüntü arşivinden



#### Sınıf IV restorasyonlar

Dr. Mohammed Al Hasani'nin klinik görüntü arşivinden



#### Kama şeklindeki bir lateral kesici dişin yeniden şekillendirilmesi

Dr. Jordi Manauta'nın klinik görüntü arşivinden



#### Diastema kapama

Dr. Valentin Vervack'ın klinik görüntü arşivinden



#### Direkt stratifikasyon kompozit kaplamalar

Dr. Osama Shaalan'ın klinik görüntü arşivinden

### özel olarak tasarlanmış



Düz bir papilla ile perio uygulamaları için özel olarak tasarlanmış Unica Proximal Deep'i kullanın

Servikal ve proksimal alanların restorasyonunu gerektiren zorlu durumlarda (tam kaplama), Unica veya Unica Minideep kullanın



Unica anterior

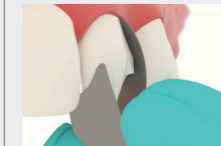


Unica minideep anterior

### Unica Proximal nasıl konumlandırılır



1 Matrisi seçin ve interproksimal olarak yavaşça kaydırın



2 Papilla ve diş arasındaki matrisi subgingival olarak sabitleyin.



3 Matrisi sabitlemek için interproksimal bir kama (örneğin; myWedge) kullanılabilir, ancak bu zorunlu değildir

el - Ενημερωτικός οδηγός



# unica proximal

in cooperation with **STYLE ITALIANO™**

## Πρόσθια τεχνητά τοιχώματα



Δείτε το βίντεο

Follow us #thinkunica



	Unica Proximal Πρόσθια τεχνητά τοιχώματα standard 0.03mm, 100 pcs	REF 6913	CE MD
	Unica Proximal Πρόσθια τεχνητά τοιχώματα standard 0.03mm, 50 pcs	REF 6914	CE MD
	Unica Proximal deep Πρόσθια τεχνητά τοιχώματα deep 0.03mm, 100 pcs	REF 6952	CE MD
	Unica Proximal deep Πρόσθια τεχνητά τοιχώματα deep 0.03mm, 50 pcs	REF 6953	CE MD

χρήση μόνο με ελαστικό απομονωτήρα - μόνο για επαγγελματική χρήση

Polydentia SA - via Cantonale 47  
6805 Mezzovico-Vira, Switzerland  
Made in Switzerland

phone: +41 91 9462948 - fax: +41 91 9463203  
info@polydentia.ch - polydentia.ch

επιλογή μήτρας

Επιλέξτε το Unica Proximal για πρόσθιες αποκαταστάσεις που εμπλέκουν τα εγγεία τοιχώματα



Unica Proximal

Unica Proximal deep

κλινικές εφαρμογές



Αποκαταστάσεις κατηγορίας III

Κλινικές εικόνες ευγενικής παραχώρησης του Dr Jordi Manauta



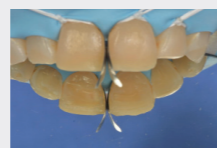
Αποκαταστάσεις κατηγορίας IV

Κλινικές εικόνες ευγενικής παραχώρησης του Dr Mohammed Al Hasani



Αναδιαμόρφωση πλάγιου τομέα κωνικού σχήματος

Κλινικές εικόνες ευγενικής παραχώρησης του Dr Jordi Manauta



Κλείσιμο διαστήματος

Κλινικές εικόνες ευγενικής παραχώρησης του Dr Valentin Vervack



Όψεις σύνθετης ρητίνης άμεσης διαστρωμάτωσης

Κλινικές εικόνες ευγενικής παραχώρησης του Dr Osama Shaalan

έχει σχεδιαστεί ειδικά για



Χρησιμοποιήστε το Unica Proximal Deep που έχει σχεδιαστεί ειδικά για περιοδοντικές εφαρμογές με επίπεδη θηλή

Σε ειδικές περιπτώσεις όπου απαιτείται η αποκατάσταση της αυχενικής και της εγγύς περιοχής (πλήρης όψη), χρησιμοποιήστε το Unica ή το Unica Minideep



Unica anterior

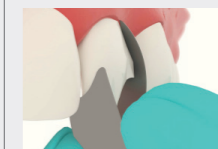


Unica minideep anterior

έχει σχεδιαστεί ειδικά για



1 Επιλέξτε τη μήτρα και μετακινήστε την απαλά διοδοντικά



2 Στερεώστε τη μήτρα μεταξύ της θηλής και του δοντιού υποουλικά.



3 Μπορεί να χρησιμοποιηθεί διοδοντική σφήνα (π.χ. myWedge) για την ασφάλιση της μήτρας, αλλά αυτό δεν είναι υποχρεωτικό



# unica proximal

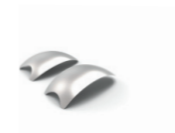
in cooperation with **STYLE ITALIANO™**





## предни матрици



гледайте  
ВИДЕОКЛИПА


Follow us  
**#thinkunica**



	Unica Proximal предни матрици standard 0.03mm, 100 pcs	REF 6913	CE MD
	Unica Proximal предни матрици standard 0.03mm, 50 pcs	REF 6914	CE MD
	Unica Proximal deep предни матрици deep 0.03mm, 100 pcs	REF 6952	CE MD
	Unica Proximal deep предни матрици deep 0.03mm, 50 pcs	REF 6953	CE MD

употреба само с гумена плоча - само за професионална употреба

Polydentia SA - via Cantonale 47  
6805 Mezzovico-Vira, Switzerland  
Made in Switzerland

phone: +41 91 946 29 48 - fax: +41 91 946 32 03  
info@polydentia.ch - polydentia.ch  


### предни матрици

Изберете Unica Proximal за предни възстановявания, включващи проксималните стени



Unica Proximal

Unica Proximal deep

### КЛИНИЧНИ ПРИЛОЖЕНИЯ



**Възстановявания от клас III**

Клинични снимки с любезното съдействие на д-р Жорди Манаута



**Възстановявания от клас IV**

Клинични снимки с любезното съдействие на д-р Мохамед Ал Хасани



**Преоформяне на страничен резец с форма на колче**

Клинични снимки с любезното съдействие на д-р Жорди Манаута



**Затваряне на диастема**

Клинични снимки с любезното съдействие на д-р Валентин Вервак



**Композитни фасети с директна стратификация**

Клинични снимки с любезното съдействие на д-р Осам Шаалан

### предназначен специално за



Използвайте Unica Proximal Deep, предназначен специално за пародонтологични приложения с плоска папила

При сложни случаи, изискващи възстановяване на шийните и проксималните области (пълна фасета), използвайте Unica или Unica Minideep



Unica anterior

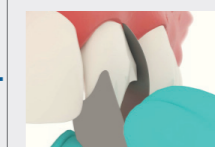


Unica minideep anterior

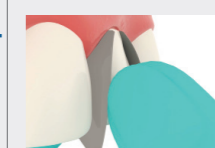
### как да позиционирате Unica



1 Изберете матрицата и внимателно я плъзнете между двете страни



2 Закрепете матрицата между папилата и зъба субгингивално.



3 За закрепване на матрицата може да се използва интерпроксимален клин (напр. myWedge), но това не е задължително.



hu - Tájékoztató útmutató



# unica proximal

in cooperation with **STYLE ITALIANO™**

## anterior matricák



videó megtekintése

Follow us  
#thinkunica



	Unica Proximal anterior matricák standard 0.03mm, 100 pcs	REF 6913	CE MD
	Unica Proximal anterior matricák standard 0.03mm, 50 pcs	REF 6914	CE MD
	Unica Proximal deep anterior matricák deep 0.03mm, 100 pcs	REF 6952	CE MD
	Unica Proximal deep anterior matricák deep 0.03mm, 50 pcs	REF 6953	CE MD

Kizárólag kofferdammal együtt használható - Kizárólag professzionális használatra

Polydentia SA - via Cantonale 47  
6805 Mezzovico-Vira, Switzerland  
Made in Switzerland

phone: +41 91 946 29 48 - fax: +41 91 946 32 03  
info@polydentia.ch - polydentia.ch  
f t i

### mátrix kiválasztása

Válassza az Unica Proximalt a proximális falakat érintő elülső restaurációkhoz



Unica Proximal

Unica Proximal deep

### klinikai alkalmazások



III. osztályú restaurációk

Klinikai képek Dr. Jordi Manauta jóvoltából



IV. osztályú restaurációk

Klinikai képek Dr. Mohammed Al Hasani jóvoltából



Klinikai képek Dr. Mohammed Al Hasani jóvoltából

Klinikai képek Dr. Jordi Manauta jóvoltából



Diastema zárása

Klinikai képek Dr. Valentin Vervack jóvoltából



Közvetlenül rétegezhető kompozit leplezések

Klinikai képek Dr. Osama Shaalan jóvoltából

### a következő célokra terveztek



Használja az Unica Proximal Deepet, amelyet kifejezetten a következő célokra terveztek perio alkalmazások lapos papillával

Kihívást jelentő esetekben, amikor a nyaki és proximális területek helyreállítására van szükség (teljes leplezés), használja az Unica vagy az Unica Minideep terméket



Unica anterior

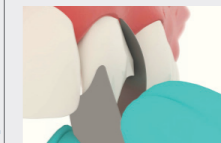


Unica minideep anterior

### az Unica Proximal pozicionálása



1 Válassza ki a mátrixot, majd óvatosan csúsztassa el interproximálisan



2 Rögzítse a mátrixot a papilla és a fog között subgingiválisan.



3 A mátrix rögzítéséhez interproximális ék (pl. myWedge) használható, de nem kötelező

Iv - Informatīvais ceļvedis



# unica proximal

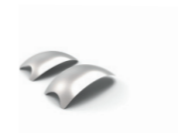
in cooperation with **STYLE ITALIANO™**

## priekšējās matricas



žiūrēkite  
vaizdo  
īrašā

Follow us  
**#thinkunica**



	Unica Proximal priekšējās matricas standard 0.03mm, 100 pcs	REF 6913	CE MD
	Unica Proximal priekšējās matricas standard 0.03mm, 50 pcs	REF 6914	CE MD
	Unica Proximal deep priekšējās matricas deep 0.03mm, 100 pcs	REF 6952	CE MD
	Unica Proximal deep priekšējās matricas deep 0.03mm, 50 pcs	REF 6953	CE MD

Izmantot tikai ar koferdama gumiju - Tikai profesionālai izmantošanai

Polydentia SA - via Cantonale 47  
6805 Mezzovico-Vira, Switzerland  
Made in Switzerland

phone: +41 91 9462948 - fax: +41 91 9463203  
info@polydentia.ch - polydentia.ch

### matricas izvēle

Izvēlieties Unica Proximal priekšējām restaurācijām, kas saistītas ar proksimālajām sienīņām



Unica Proximal

Unica Proximal deep

### klīniskie lietojumi



III klases restaurācijas

Klīnisko attēlu autors: Dr. Jordi Manauta



IV klases restaurācijas

Klīnisko attēlu autors: Dr. Mohammed Al Hasani



Tapas formas sānu priekšzoba formas mainīšana

Klīnisko attēlu autors: Dr. Jordi Manauta



Diastēmas slēgšana

Klīnisko attēlu autors: Dr. Valentin Vervack



Tiešās stratifikācijas kompozītmateriālu venīri

Klīnisko attēlu autors: Dr. Osama Shaalan

### kas īpaši izstrādāts



Izmantojiet Unica Proximal Deep, kas īpaši izstrādāts lietošanai zobiem ar plakanām papillām

Sarežģītos gadījumos, kad nepieciešams atjaunot kakliņa un proksimālās zonas (pilns venīrs), izmantojiet Unica vai Unica Minideep



Unica anterior

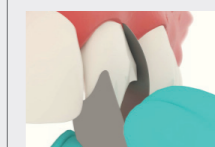


Unica minideep anterior

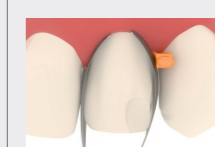
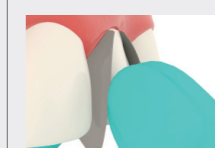
### Unica Proximal novietošana



1 Izvēlieties matricu un uzmanīgi bīdiet to starpproksimālā stāvoklī



2 Nostipriniet matricu starp papillu un zobu zem smaganām



3 Lai nostiprinātu matricu, var izmantot interproksimālo ķīli (piem., myWedge), taču tas nav obligāti.

It - Informacinis vadovas



# unica proximal

in cooperation with **STYLE ITALIANO™**

## priekinės matricos



	Unica Proximal priekinės matricos standard 0.03mm, 100 pcs	REF 6913	CE MD
	Unica Proximal priekinės matricos standard 0.03mm, 50 pcs	REF 6914	CE MD
	Unica Proximal deep priekinės matricos deep 0.03mm, 100 pcs	REF 6952	CE MD
	Unica Proximal deep priekinės matricos deep 0.03mm, 50 pcs	REF 6953	CE MD

Naudokite tik guminę užtvaną - Skirta tik specialistams



skatieties videoklipu

Follow us  
#thinkunica

Polydentia SA - via Cantonale 47  
6805 Mezzovico-Vira, Switzerland  
Made in Switzerland

phone: +41 91 9462948 - fax: +41 91 9463203  
info@polydentia.ch - polydentia.ch

### matricos parinkimas

Pasirinkite priekinėms restauracijoms, apimančioms proksimalines sienes, skirtą „Unica Proximal“



Unica Proximal

Unica Proximal deep

### klinikinis pritaikymas



III klasės restauracijos

Dr. Jordi Manauta klinikiniai vaizdai



IV klasės restauracijos

Dr. Mohammed Al Hasani klinikiniai vaizdai



Kaiščio formos šoninio priekinio danties formos keitimas

Dr. Jordi Manauta klinikiniai vaizdai



Diastemos uždarymas

Dr. Valentino Vervacko klinikiniai vaizdai



Tiešas stratifikācijas kompozitmateriālu finieri

Dr. Osama Shealan klinikiniai vaizdai

### specialiai skirta



Naudokite „Unica Proximal Deep“, specialiai skirtą periodontiniam gydymui su plokščia papile

Tais sudėtingais atvejais, kai reikia atkurti kaklelio ir proksimalines sritis (pilna laminatė), naudokite „Unica“ arba „Unica Minideep“



Unica anterior

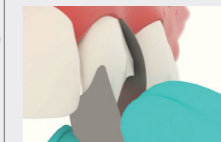


Unica minideep anterior

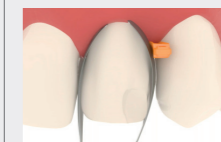
### kaip nustatyti padėtį



1 Pasirinkite matricą ir atsargiai stumkite ją tarp interproksimaliai



2 Užfiksuokite matricą tarp papilos ir danties po dantenomis.



3 Matricai tvirtinti tarpdantini pleištą (pvz., „myWedge“), tačiau tai nėra privaloma.

ro - Ghid de informare



# unica proximal

in cooperation with **STYLE ITALIANO™**

## matrici anterioare



urmăriți videoclipul

Follow us  
**#thinkunica**



	Unica Proximal matrici anterioare standard 0.03mm, 100 pcs	REF 6913	CE MD
	Unica Proximal matrici anterioare standard 0.03mm, 50 pcs	REF 6914	CE MD
	Unica Proximal deep matrici anterioare deep 0.03mm, 100 pcs	REF 6952	CE MD
	Unica Proximal deep matrici anterioare deep 0.03mm, 50 pcs	REF 6953	CE MD

A se utiliza numai cu baraj de cauciuc - Numai pentru uz profesional

Polydentia SA - via Cantonale 47  
6805 Mezzovico-Vira, Switzerland  
Made in Switzerland

phone: +41 91 9462948 - fax: +41 91 9463203  
info@polydentia.ch - polydentia.ch

### selectarea matricei

Alegeți Unica Proximal pentru restaurările anterioare care implică pereții proximali



Unica Proximal

Unica Proximal deep

### aplicații clinice



Restaurări din clasa a III-a  
Imagine clinică prin amabilitatea Dr. Jordi Manauta



Restaurări din clasa a IV-a  
Imagine clinică prin amabilitatea Dr. Mohammed Al Hasani



Remodelarea unui incisiv lateral în formă de con  
Imagine clinică prin amabilitatea Dr. Jordi Manauta



Închiderea diastemei  
Imagine clinică prin amabilitatea Dr. Valentin Vervack



Stratificarea directă a fațetelor compozite  
Imagine clinică prin amabilitatea Dr. Osama Shaalan

### conceput special pentru



Folosiți Unica Proximal Deep conceput special pentru aplicații perio cu papilă plată

În cazurile solicitante care necesită restaurarea zonei cervicale și proximale (fațetare completă), utilizați Unica sau Unica Minideep



Unica anterior

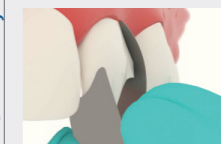


Unica minideep anterior

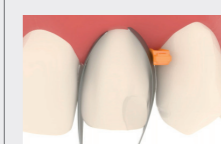
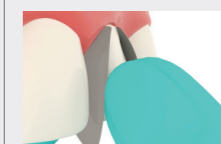
### cum se poziționează



1 Selectați matricea și glisați-o ușor interproximal



2 Fixați matricea între papilă și dinte subgingival



3 Se poate folosi o pană interproximală (de exemplu, myWedge) pentru a fixa matricea, dar nu este obligatorie.

sk - Informatívny sprievodca



# unica proximal

in cooperation with **STYLE ITALIANO™**

## predné matrice



pozrite si video

Follow us  
**#thinkunica**



	Unica Proximal predné matrice standard 0.03mm, 100 pcs	REF 6913	CE MD
	Unica Proximal predné matrice standard 0.03mm, 50 pcs	REF 6914	CE MD
	Unica Proximal deep predné matrice deep 0.03mm, 100 pcs	REF 6952	CE MD
	Unica Proximal deep predné matrice deep 0.03mm, 50 pcs	REF 6953	CE MD

Používajte len s koferdamom z kaučuku - len na profesionálne použitie

Polydentia SA - via Cantonale 47  
6805 Mezzovico-Vira, Switzerland  
Made in Switzerland

phone: +41 91 9462948 - fax: +41 91 9463203  
info@polydentia.ch - polydentia.ch  
f t i

### výber matrice

Pre frontálne výplne zahŕňajúce proximálne plochy zvolte Unica Proximal



Unica Proximal

Unica Proximal deep

### klinické aplikácie



#### Výplne triedy III

Klinické snímky s láskavým dovolením Dr. Jordi Manauta



#### Výplne triedy IV

Klinické snímky s láskavým dovolením Dr. Mohammeda Al Hasanho



#### Zmena tvaru čapíkovitého laterálneho rezáka

Klinické snímky s láskavým dovolením Dr. Jordi Manauta



#### Uzavretie diastému

Klinické snímky s láskavým dovolením Dr. Valentina Vervacka



#### Kompozitné fazety s priamym vrstvením

Klinické snímky s láskavým dovolením Dr. Osamu Shaalana

### určenú špeciálne



Použite matricu Unica Proximal Deep určenú špeciálne pre paradontologické aplikácie s plochou papilou

V náročných prípadoch vyžadujúcich obnovu krčkov a proximálnych plôch (kompletná fazeta) použite matricu Unica alebo Unica Minideep



Unica anterior

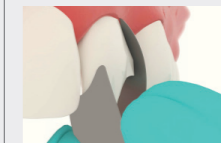


Unica minideep anterior

### ako umiestniť matricu



1 Vyberte matricu a jemne ju zasunúte do interproximálnej oblasti



2 Zaisťte matricu medzi papilou a zubom subgingiválne.



3 Na zaistenie matrice je možné použiť interproximálny klin (napr. myWedge), ale nie je to nutné